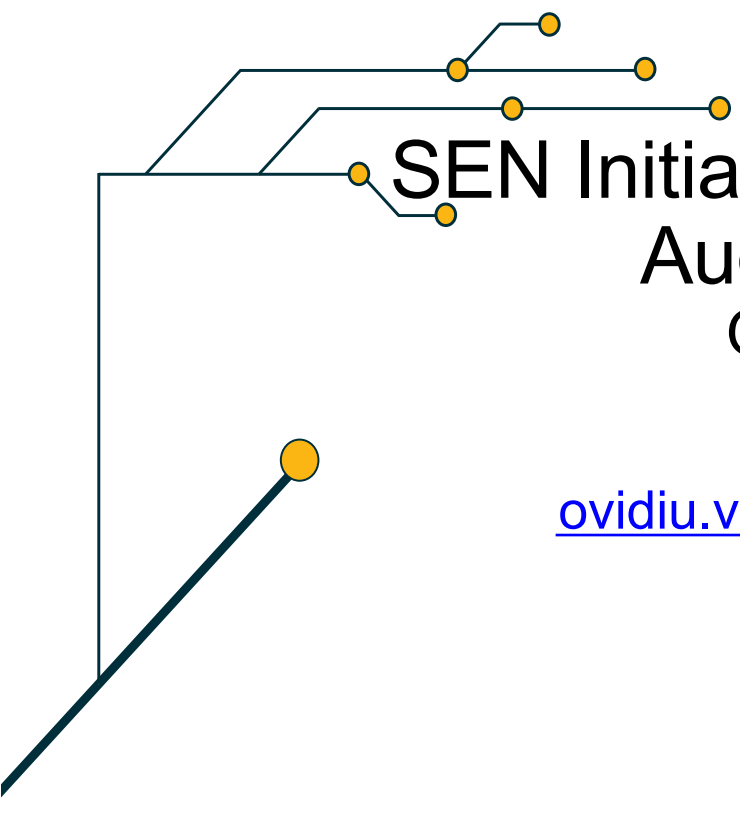


Completing the NM Broadband Highway



SEN Initiative / OBAE Updates

August 17, 2023

OBAE / BDCP

Ovidiu Viorica

ovidiu.viorica@connect.nm.gov



Subscribe to New Mexico Broadband Connections

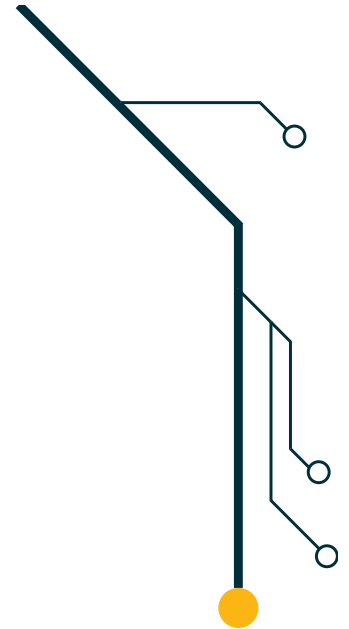


Completing the NM Broadband Highway

Updates

- PSFA Broadband (BDCCP) Team -> OBAE
 - Juanita, Paulo, Mike, Ovidiu
- New OBAE Albuquerque Office
- OBAE Team is growing
 - Vanessa, Alex, John, Monica, Jose, Richard
 - Three PM positions advertised
- Current and future workload
- New Mexico – 3 Year Strategic Plan (January 1st, 2023)
 - [Connect.nm.gov](https://connect.nm.gov)

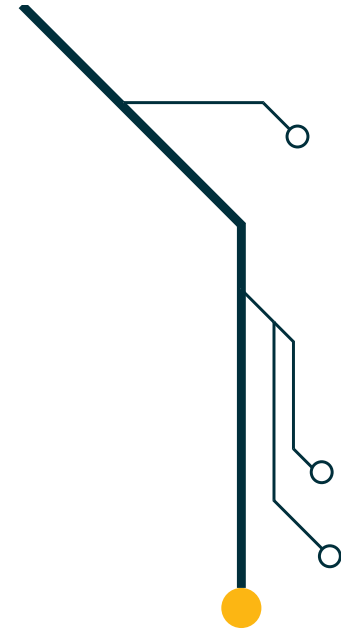
Will require state investment in addition to federal funds



Completing the NM Broadband Highway

Updates

- Student Connectivity Projects
- Over \$700M in broadband infrastructure projects
 - NM Broadband Pilot
 - Tribal Broadband Connectivity Program (& TBCP 2.0)
 - ReConnect (USDA)
 - NTIA Middle Mile
- Connect NM Fund \$100M
- BEAD (Broadband Equity Access and Deployment): \$675M



Will require state investment in addition to federal funds

Completing the NM Broadband Highway

Updates

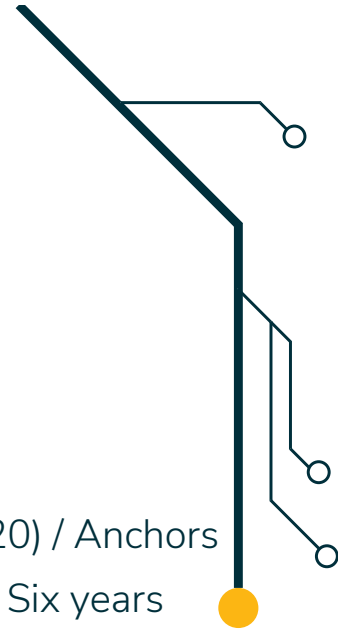
- **BEAD Process**

- 5 Year Plan (August 28)
- Initial Proposal Volume 1 & Volume 2 (December 27)
- Final Proposal – One year after Initial Proposal is approved
 - List of projects/awards – 100% Unserved (25/3) / Underserved (100/20) / Anchors
 - ~1B in broadband work (Last Mile primarily) / OBAE request \$350M / Six years

- **Digital Equity**

- Affordability (+ cybersecurity)
- Digital skills + Devices
- Workforce development

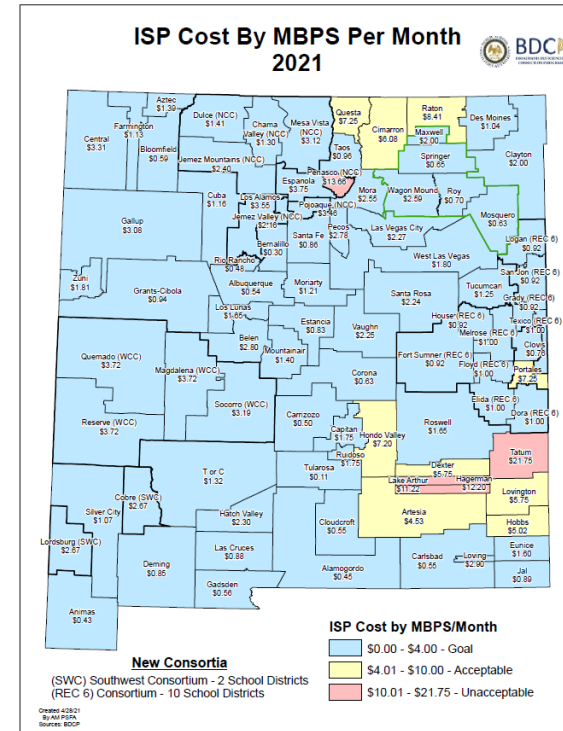
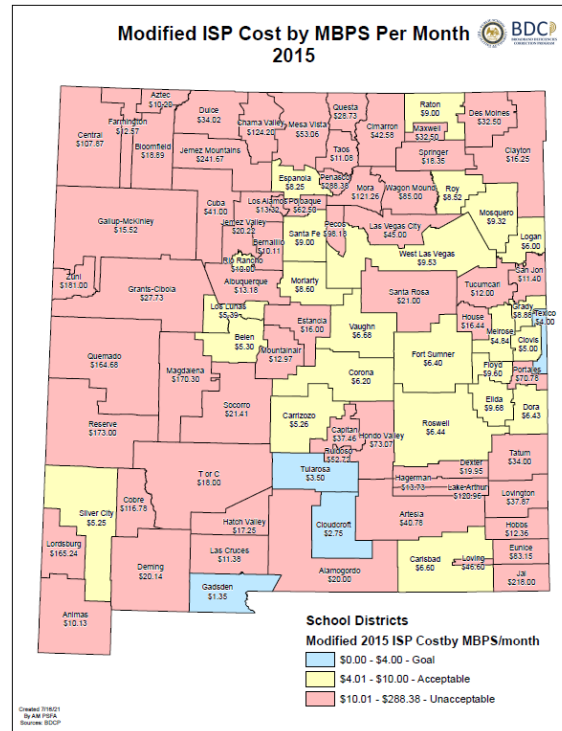
Will require state investment in addition to federal funds



Completing the NM Broadband Highway

2015-2021 K12 Broadband work

- NM K12 average broadband unit cost decreased by 80%
- Broadband capacity increased 6X
- E-rate funding leveraged 2X
- NM Schools - top 10 for progress

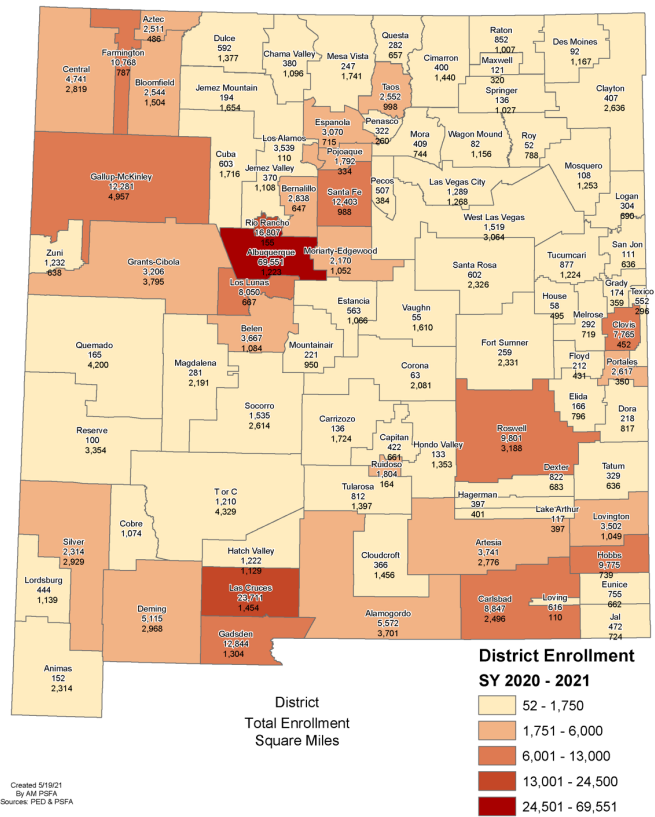


Will require state investment in addition to federal funds

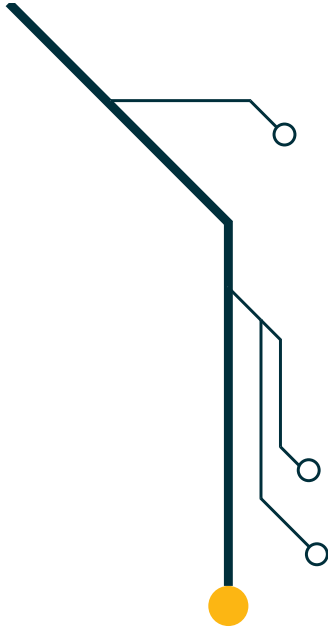
Completing the NM Broadband Highway

NM School Districts

- NM is remote, rural & sparsely populated
- IT expertise is not uniformly available
- Statewide Education Network (SEN) will provide better connectivity and expert network management



Will require state investment in addition to federal funds



Completing the NM Broadband Highway

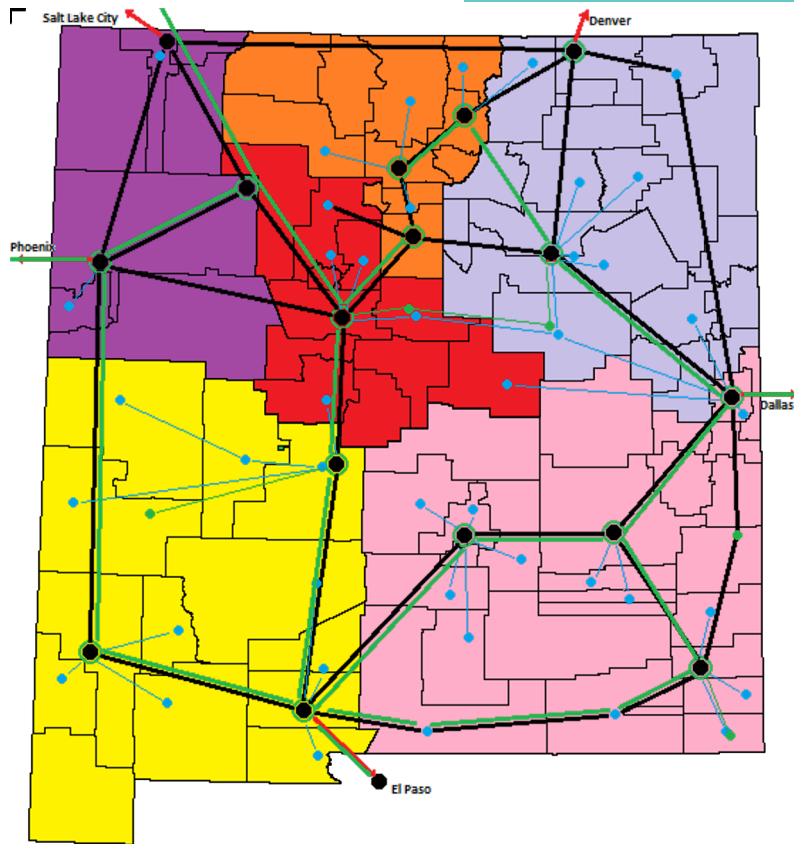
SEN Rationale

- Optimize the connectivity to schools
- Allow sharing of resources
 - Lessons plans, instructional material, learning platforms, professional development
- Leverage and maximize E-rate funding
- Reduce administrative burden
- Reduce cybersecurity risks (DDoS mitigation, monitoring)
- Same cost to the school (or lower)



Will require state investment in addition to federal funds

Completing the NM Broadband Highway



SEN is the foundation for the State-Coordinated Middle Mile

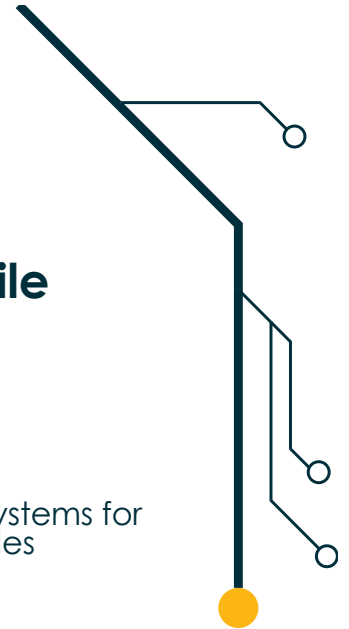
Nodes

Upgrading electrical and cooling systems for Higher Ed facilities housing SEN Nodes

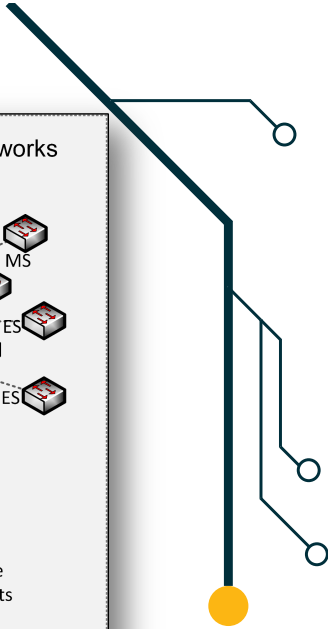
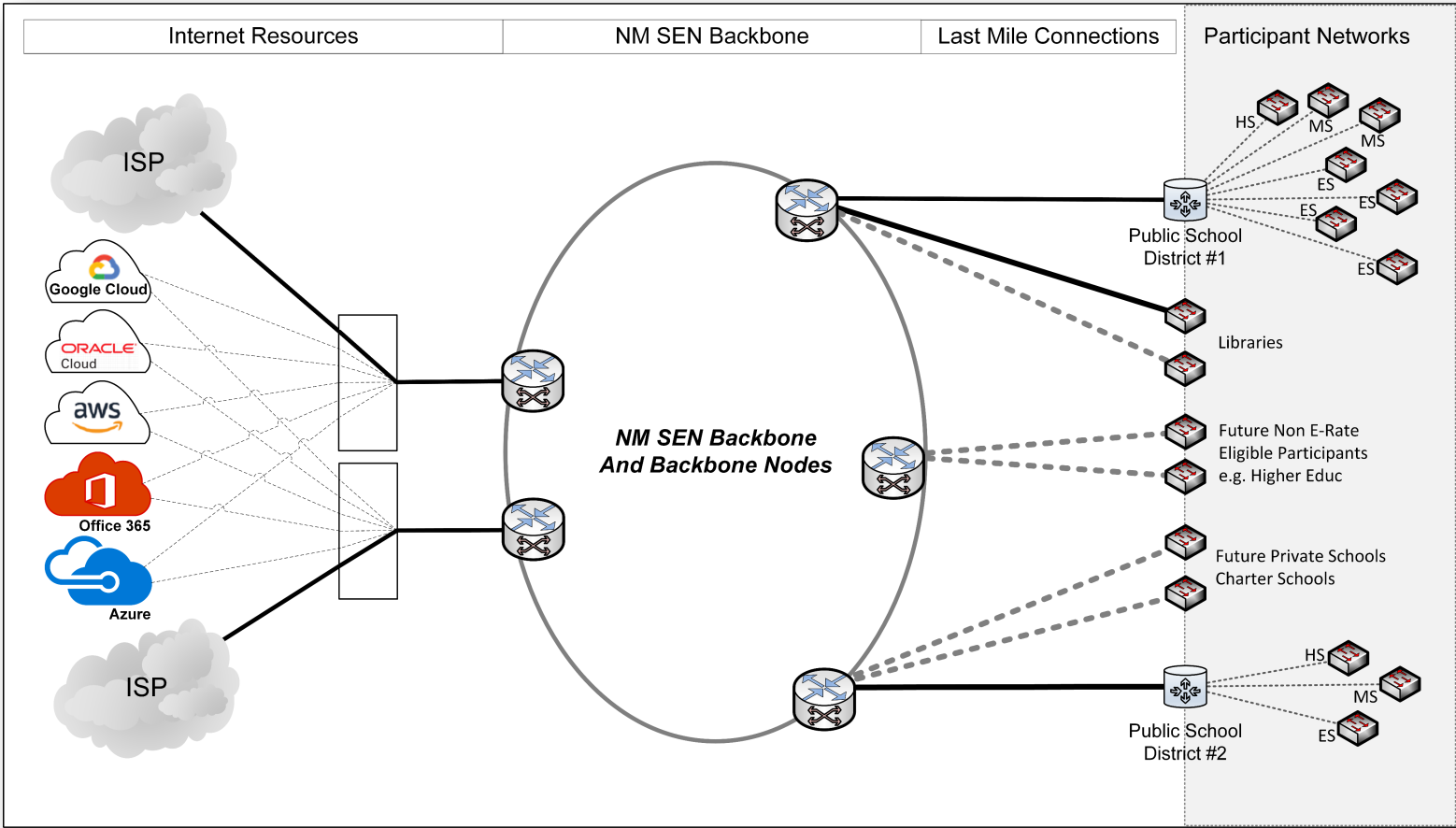
Major Routes/**Internet**

Adding key "Middle Mile" corridors, closing of rings for resiliency (a "box" around the SEN)

"Meet Me" and aggregation points become launching points for "Last Mile"

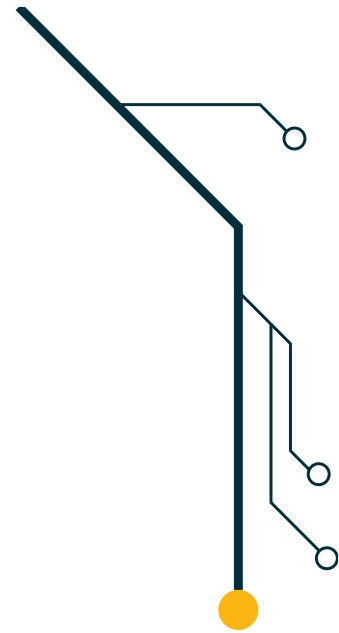
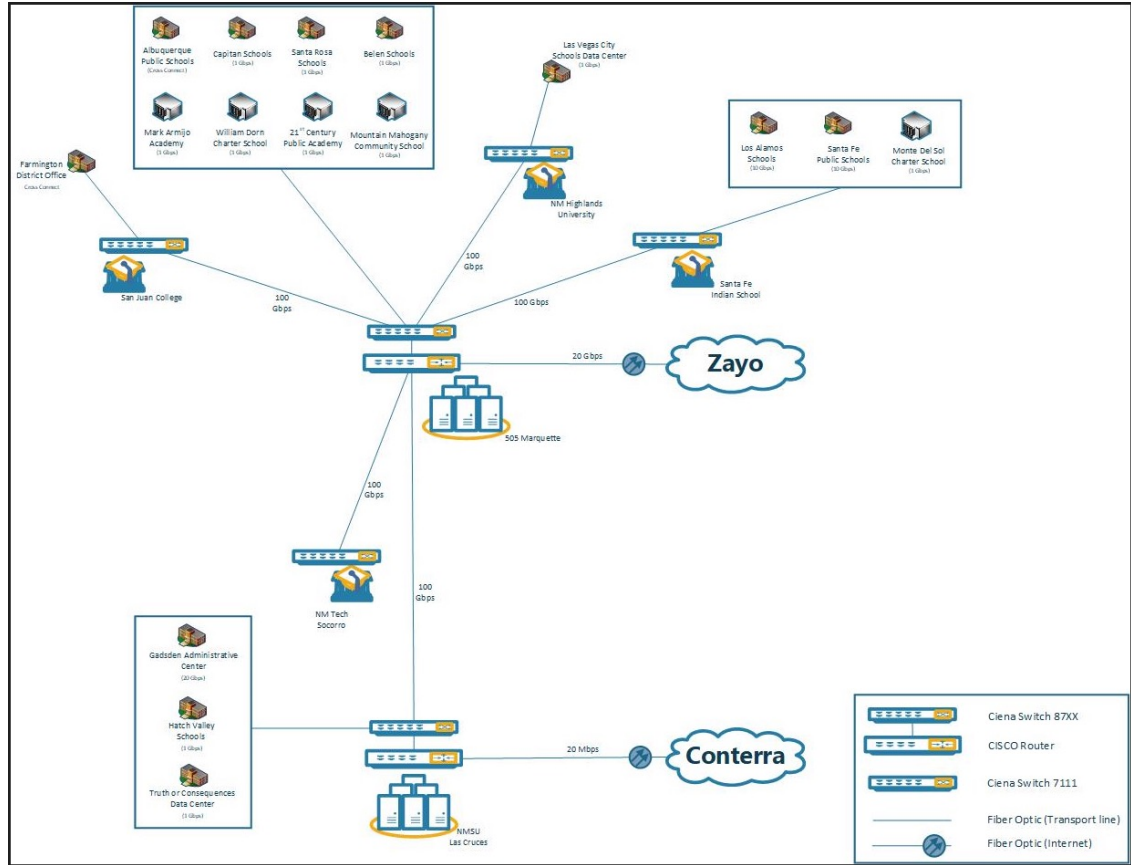


Completing the NM Broadband Highway



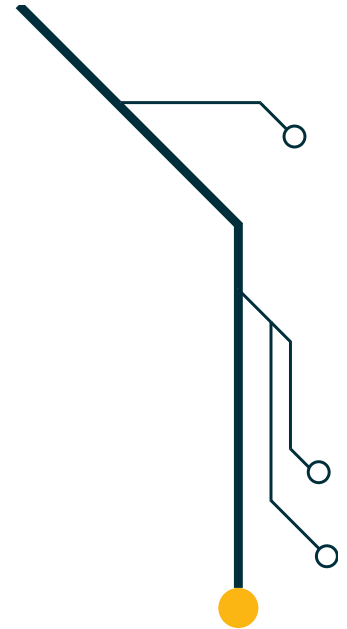
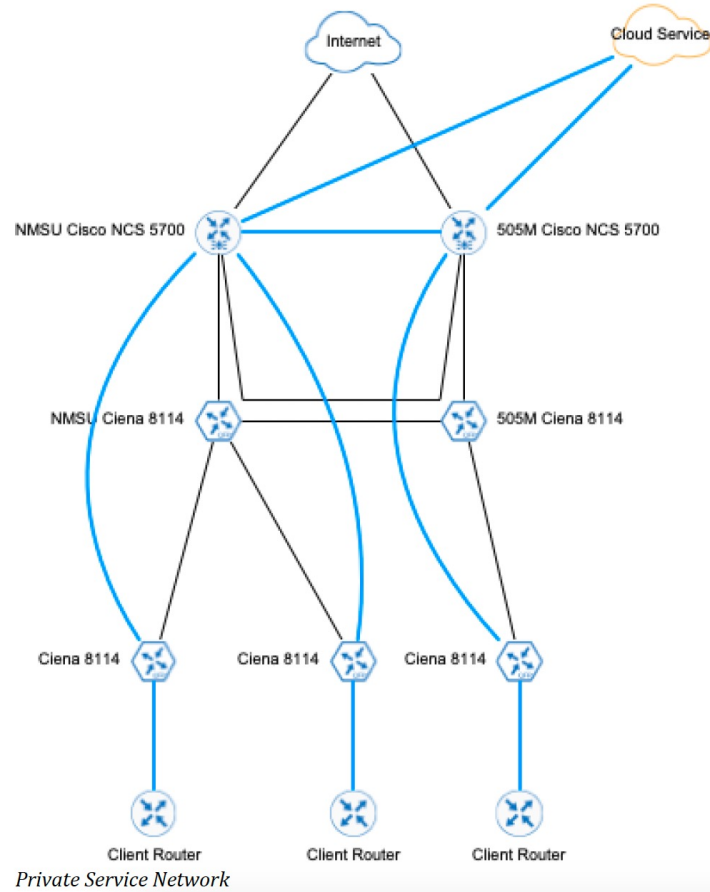
SEN Phase 1

Completing the NM Broadband Highway



SEN Phase 1

Completing the NM Broadband Highway

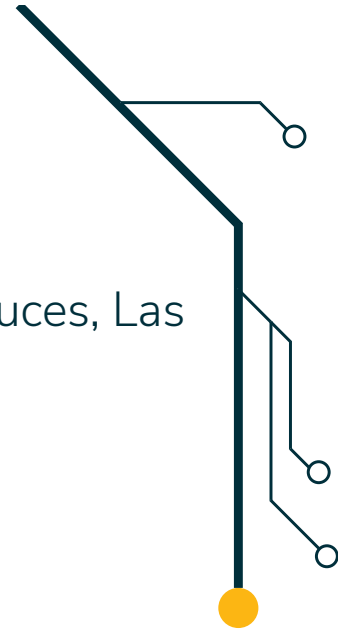


Completing the NM Broadband Highway

Sequence

- **Phase 1:**
 - Nodes in Albuquerque, Socorro, Farmington, Santa Fe, Las Cruces, Las Vegas (& Gallup, Roswell, Silver City, Clovis)
 - Backbone circuits between nodes
 - Commodity Internet in two locations
 - Switch over Last Mile Circuits
- **Phase 2**
 - RFP for additional Last Mile circuits (expiring '23/24) – 45 districts/charters
 - Negotiations & Contracting
 - Add schools to the SEN

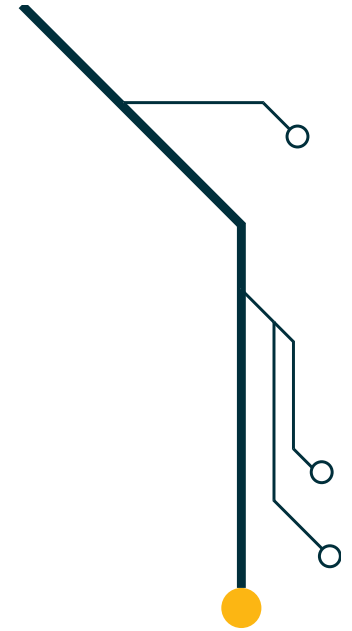
Will require state investment in addition to federal funds



Completing the NM Broadband Highway

SEN Status

- **Phase 1:**
 - Nodes Upgrades: Under design, Phased Approach
 - Equipment:
 - Cisco Routers – Delivered
 - Ciena Aggregation Routers – Mid September (first 4-6)
 - Optical waves delivery – site visits in progress
 - Last Mile contracts – in progress
 - Network Management RFP



Will require state investment in addition to federal funds

Completing the NM Broadband Highway

Timeline



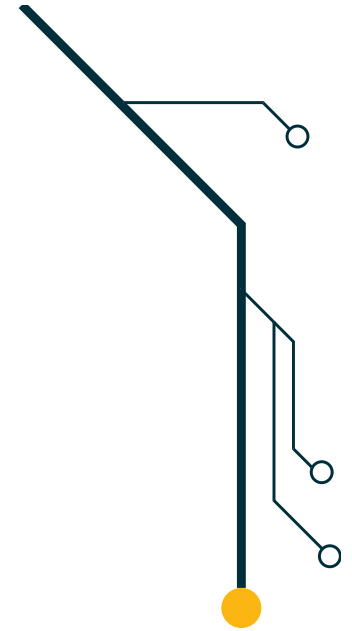
	Nov-22	Dec-22	Jan-23	Feb-23	Mar-23	Apr-23	May-23	Jun-23	Jul-23	Aug-23	Sep-23	Oct-23	Nov-23	Dec-23	Jan-24	Feb-24	Mar-24	Apr-24	May-24	Jun-24
Phase 1 (17 schools)													Core Network E-rate App.							
	Contracts Negotiation						Equipment Delivery / Configuration / Core Network / Testing						Last Mile Circuits Phase 1							
	Nodes Upgrades (Higher Ed): ~6-12 Nodes																			
Phase 2 (45+ schools)													Last Mile E-rate App.							
										RFP (Last Mile)		Evaluation&Awards		Contracts		Last Mile Circuits Phase 2				
Phase 3 - 2024 (XXX Schools)										Phase 3 RFP (Last Mile) - 2024/2025										

Will require state investment in addition to federal funds

Completing the NM Broadband Highway

SEN – Other Priorities

- **Statewide Education Network – Enabler**
 - Cybersecurity
 - Access to other tools and platforms
 - Education Technology
 - Professional development
 - Online classes
 - Instructional (vetted) material – lesson plans/instructional videos/digital books
 - Online libraries
- **Call to Educational Professionals Community**



Will require state investment in addition to federal funds

Completing the NM Broadband Highway

BEAD & Digital Equity – Other Priorities

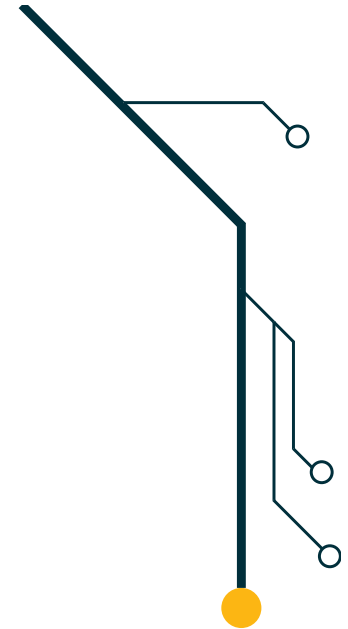
- **Workforce Development**
 - K12
 - Higher Ed (Research & Community Colleges)
 - Fiber splicers, tower climbers, technicians, electricians, project engineers, network engineers, PMs, permit specialists, sales, office support, helpdesk...
 - Industry
 - Apprenticeships
 - Project development & Implementation
 - Maintenance & Operations / Sustainability
- **Digital Equity / Digital Literacy**



Will require state investment in addition to federal funds

Questions?

Completing the NM Broadband Highway



Ovidiu Viorica: 505-270-1355 / ovidiu.viorica@connect.nm.gov

Will require state investment in addition to federal funds