

CONNECT
new mexico

Office of Broadband Access & Expansion

Connecting the Dots On The Map - FCC Data & Mapping Update

Natalie Runyan, NM Geospatial Information Officer

MAY 24, 2023



Connecting the Dots - Broadband is Everybody's Business



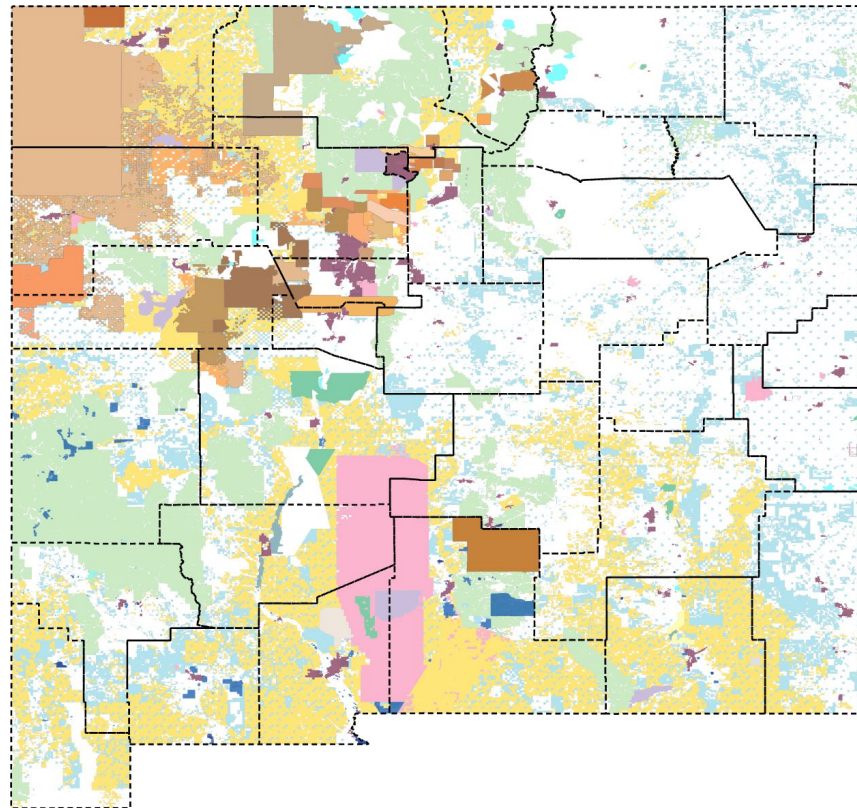
- Federal – 4 @ 33%
- Pueblos, Tribes & Nations – 23 @ 11%
- State - 12%
- Counties - 33
- Incorporated Places - 107
- Colonias – 145
- Private – 44%

DISPERSED...

INTERMINGLED...



...COMPLEX!





Initial Challenges

- **Locations:** By the upcoming Jun 2023 release date, OBAE expecting to have a **net gain of close to 40,000 locations – over 4% of our total**
- **Service Availability:** To date, OBAE challenged 188,382 claims, of which 103,895 resulted in a data correction. Of those,
 - At least 600 would go from **Served to Underserved**
 - At least 1,100 would go from **Served to Underserved**
 - At least 8,000 would go from **Underserved to Underserved**

Next: continue to challenge on FCC's 'annual' cycle

- **Better data through engagement, awareness**
- **Will increasingly result in “gains and losses”**
 - **BSL is the barn not the house...**
 - **five units not three...**
 - **those are 911 destinations but no BSL...**

FCC Data Challenge: Timelines



2022 | **2023** | **2024**

Initial Challenge Cycle

Locations | Service Availability | Final Service at Final Locations

Second Challenge Cycle

Locations | Service Availability | Final Service at Final Locations

Third Challenge Cycle

Locations | Service Availability | Final Service at Final Locations

TODAY 



New Mexicans are the best source of our “truth”

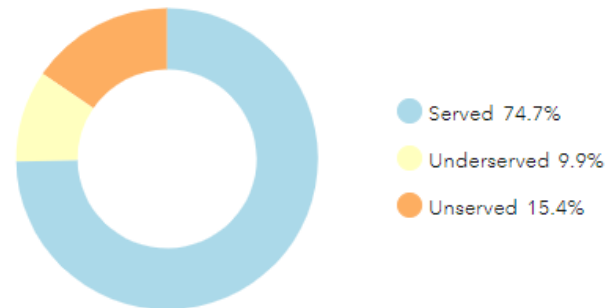
- FCC got us started, but we’ll build from there

NM’s “Best Available” data

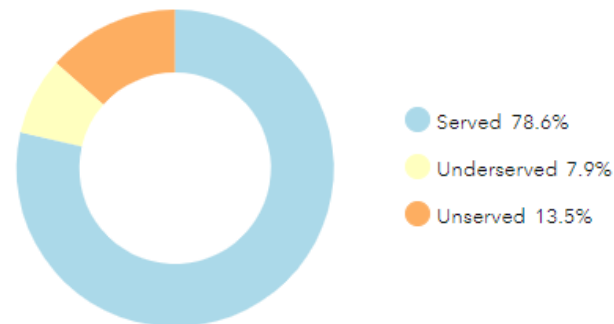
Sources? You.

- 911 & Local Entities
- Challenged Locations & Service Availability
- Ookla Speed Tests
- ISPs (early FCC Data, sustained potential versus snapshots)
- Building footprints, Master Address Aliases
- Data Validation & Comparison routines

NM Updated Service Availability As of March 2023



FCC Service Availability June 2022



New Mexico Broadband: Service Availability Status

Plus NM Best Available Information

Step 1 Select a Boundary
County

Step 2 Select a Place wi...
Eddy County

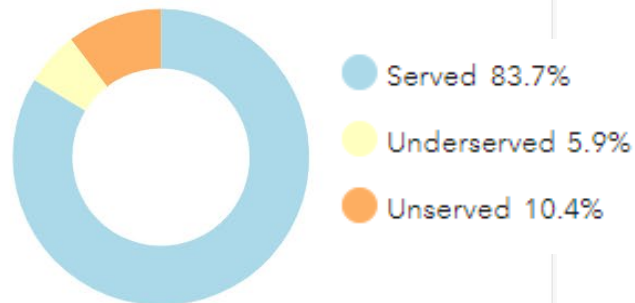


NM Broadband Internet Service Availability

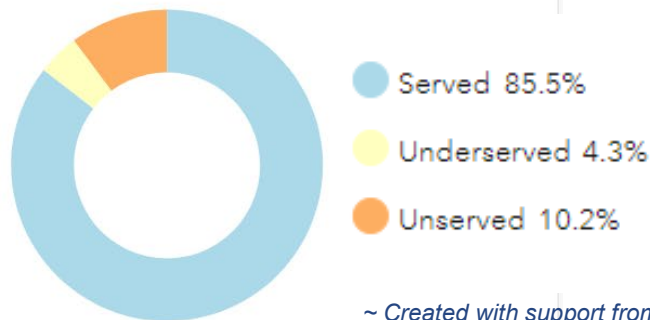
The maximum broadband service availability (un/under/served) claimed by the internet service providers, for each of the broadband serviceable locations published by the Federal Communications Commission.

The Pie Charts are filtered based on the selection and not based on the map extent. March 2023 statistics reflect challenges submitted to the FCC by the State of New Mexico from November 2022 to March 2023.

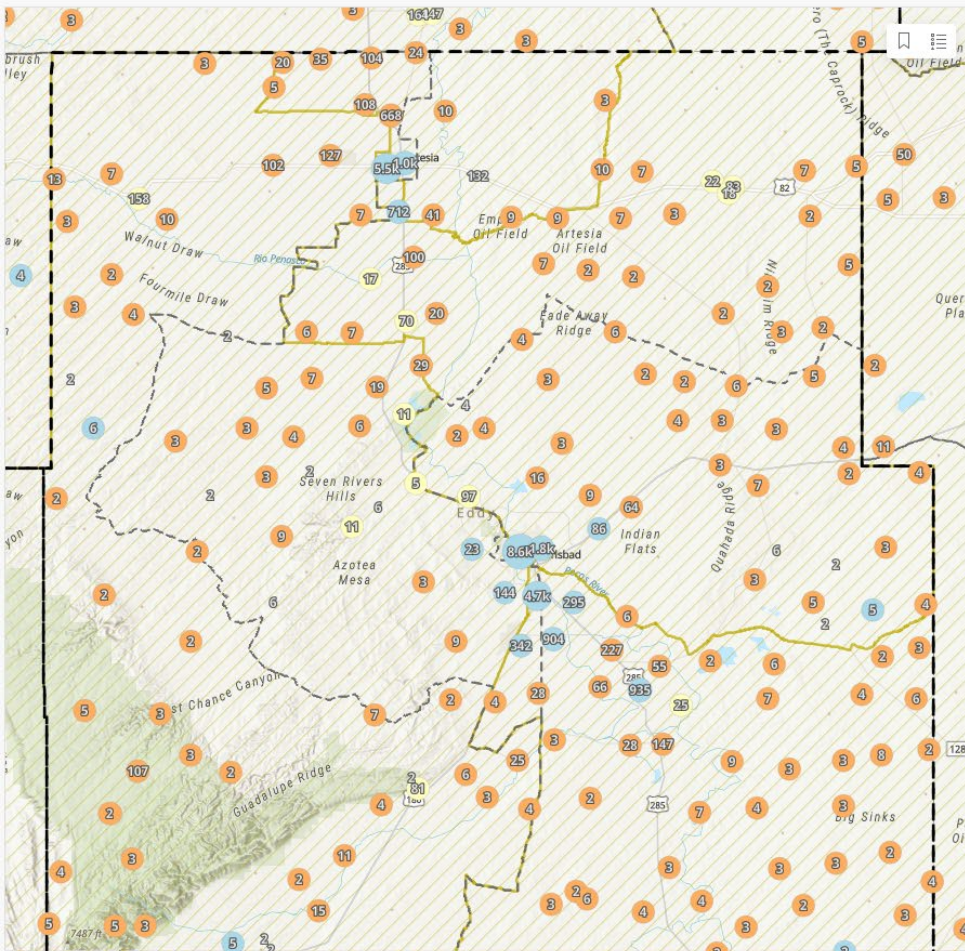
NM Updated Service Availability As of March 2023



FCC Service Availability June 2022



~ Created with support from RESPEC

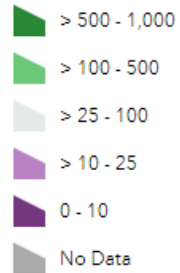


Connectivity: FCC versus “Best Available” Data

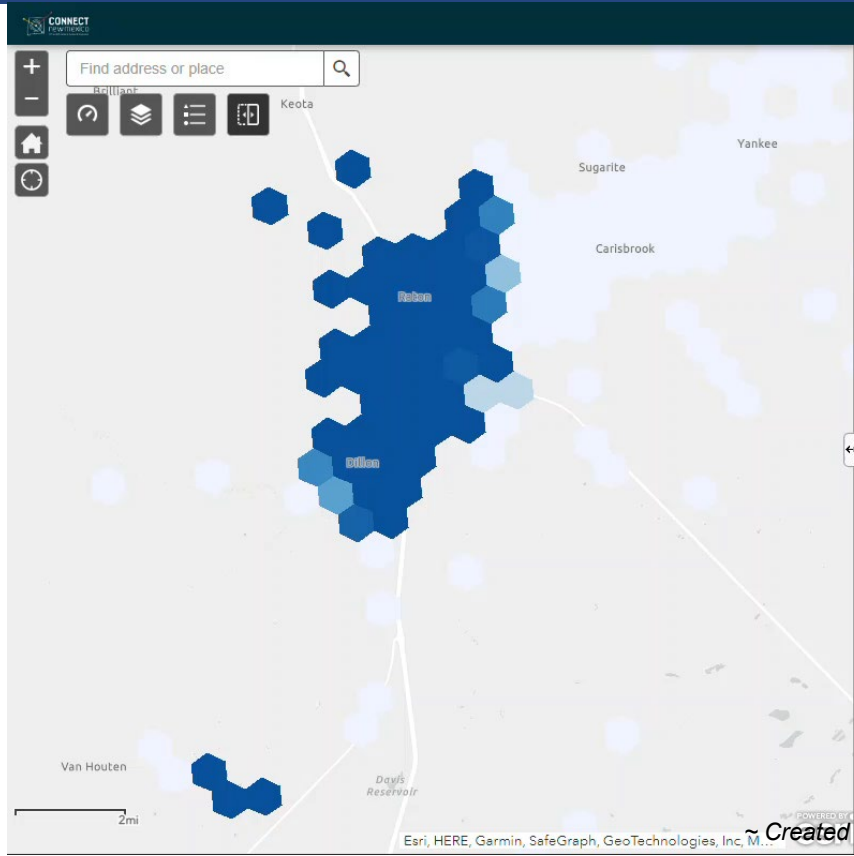
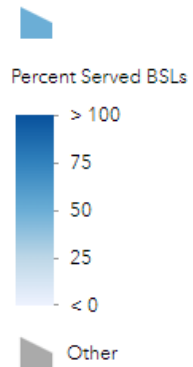


Ookla Speedtests by H3 Resolution 8 Hexagon

Top Download Mbps



FCC BDC % Served at 100Mbps/20Mbps by H3 Resolution 8 Hexagon





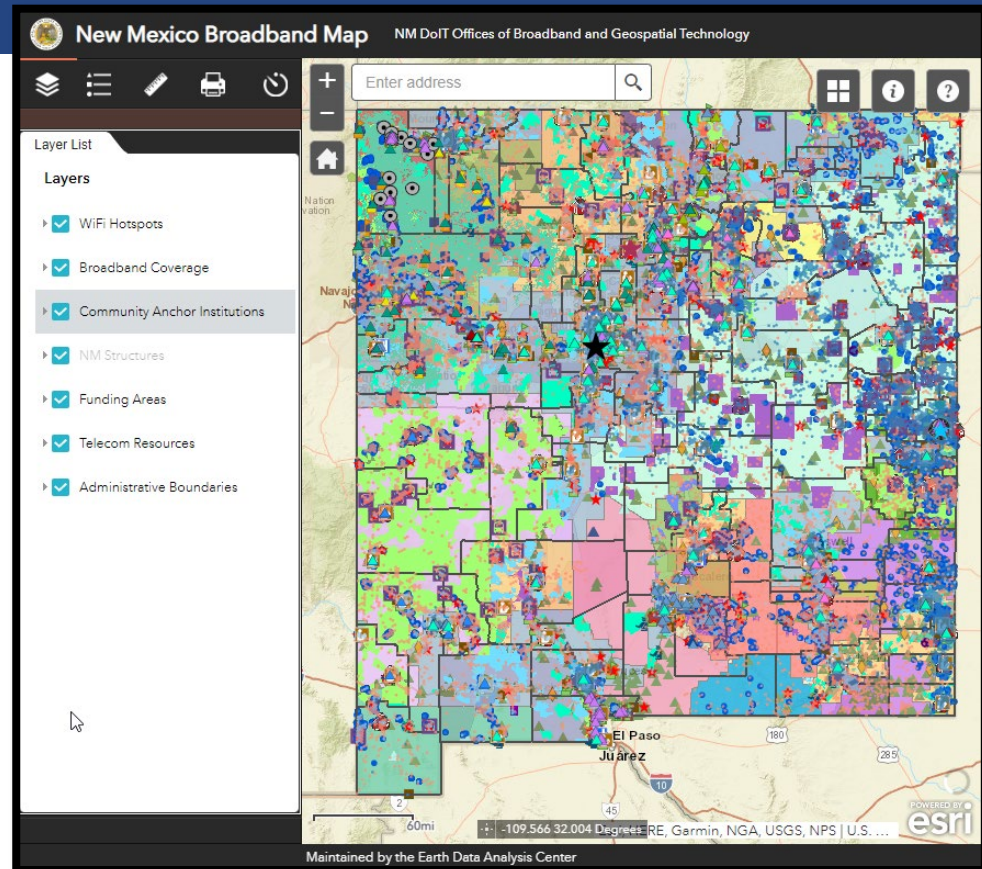
Solid Data Foundation (past 10 years)

- Establish Priorities & Awareness




Future is more sophistication

- FCC moved from blocks to points
- New Funding
- Stimulates more *dynamic* data

Evolution of the Broadband “Map”





-  **How to use our knowledge to get the best outcomes.**
-  **OBAE building mapping tools to help**
 - **assess your status**
 - **envision your future**
 - **monitor progress**
 - **improve data**
-  **Tools and Methods depend on your role and scale** (consumer or producer; individual or community)



New Mexico Broadband Grant Program Map

Last edited March 2023. For questions or feedback [contact us](#)

Grant Eligibility Speed/Technology

Layers





- BSL by Availability (FCC as of June 2022)
- Broadband Coverage (FCC as of June 2022)

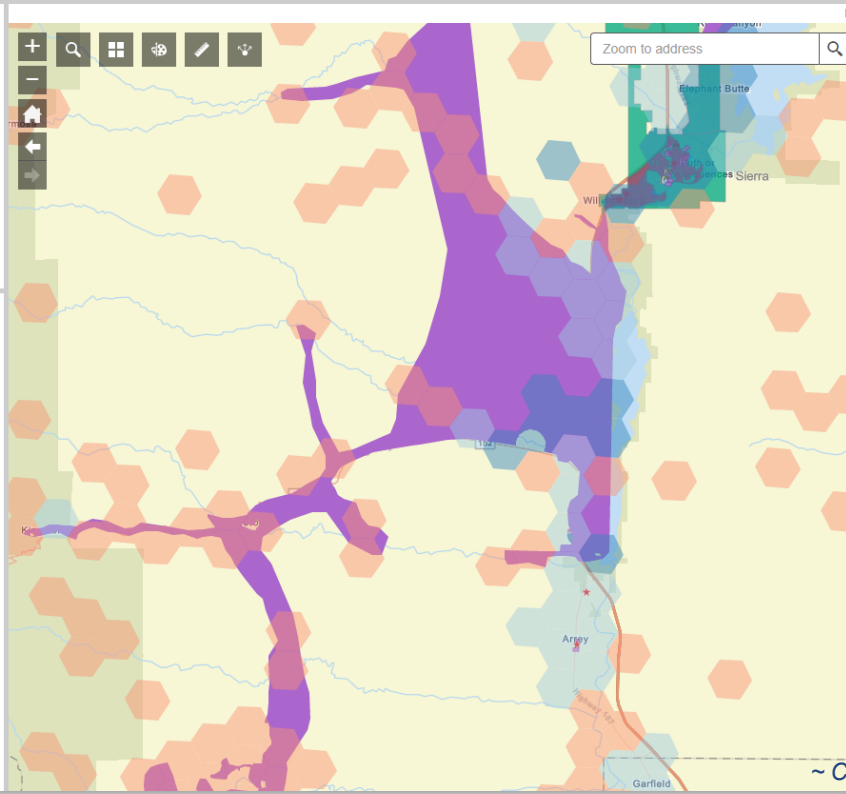
Availability

-  Served
-  Underserved
-  Unserved

General State Projects Federal Projects

Layers

- High Cost Universal Broadband (HUBB) Data - Deployed Location (Dec 2022)
- ReConnect 100% Grant Under Review (2023)
- ReConnect 50/50% Loan/Grant Under Review (2023)
- ReConnect Awarded Area (2019-2022)
 -  100% Grant
 -  100% Loan
 -  50/50% Loan/Grant
 -  100% Grant Tribal/SV Community
- FCC RDOF (Auction 904) Awarded Area (2020)
- CAF I Award Area by Company (2017)
- CAF II Award Area by Company (2018)
- FCC 2.5 GHz Rural Tribal Applications



Speed Test About Funding



New Mexico Broadband Program
Office of Broadband Access and Expansion
Department of Information Technology



Resource Maps Available at: [Statewide Maps](#)

Legend Print Query Addressed Locations

PRC Funded Project (2020-2021)



PRC Funded Project (2018-2022)






Fire Station



Early Childhood Facility



Hospitals

-  Hospital
-  Nursing Home
-  Urgent Care Facility

Health Centers



Speedtests: FCC (for mobile) or NM (for wired) <https://nmbbmapping.org/survey/>

Street Address Example	City Capitan	States NM	Zip 87001
Providers La Jicarita Rural Telephone Cooperative	Technology DSL	Monthly Cost \$ 40.00	Connection <input type="radio"/> WiFi <input checked="" type="radio"/> Wired <input type="radio"/> Cell Phone
Location Type Residence	<input type="checkbox"/> Check this box if you do not want your address shared.	Sharing your location will benefit applying for federal funds to improve connectivity.	





Location Challenges:

- FCC: individual (map) or community (bulk; we can help; [share with us](#))
- NM map: community-scale bulk submissions, if you need help with analysis

Service Challenges:

- Talk to your ISP
- FCC: individual
- NM Survey: individual, ‘simpler’
- FCC: community “knowledge of infrastructure” (bulk; we can help with analysis; [share with us](#))

NM “Best Practices” (*Ideas & Suggestions*) for community-scale challengers

- Please share your lessons learned, insights, methods!



- Web-access
- User account
- FCC format-ready
- Load your own data
- Add or Update records
- Locations & Availability
- Add service to your GIS

Location Challenge Availability Challenge

NM Location and Availability Challenge



Information Needed

Challenge Location Unit unit

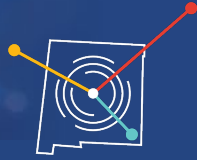
Example single family home - 1 unit, duplex 2 units

Building Code Type

Create

bsl_fabric_location_challenge_sch
ema

- 1. - Missing Broadband Serviceable Location
- 2. - Incorrect Location Primary Address
- 3. - Incorrect Location Unit Count



CONNECT
new mexico

Office of Broadband Access & Expansion

QUESTIONS?

MAY 24, 2023

