



0.90677

CONNECT new mexico

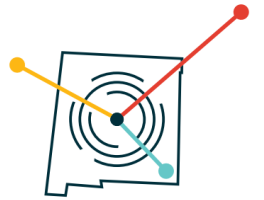
Office of Broadband Access & Expansion

Connect New Mexico Fund Pilot Program ARPA-CPF

Office Hours-Roundtable

December 18, 2025

Office Hours – December 18th, 2025, 3pm Mtn



Introductions

Program Updates

Workforce Development Project

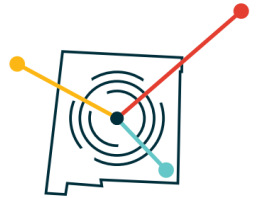
Last But Not Least

Questions

- Central New Mexico Electric Cooperative
- Comcast
- Ethos/SwC/Commnet
- Oso Internet Solutions
- Peñasco Valley Telephone Cooperative,
- Pueblo of Jemez
- Pueblo of Laguna
- Pueblo of Nambe
- Pueblo of Santa Ana
- Santo Domingo Pueblo
- Socorro Electric Cooperative
- Tularosa Communications
- Valley Telecom Group
- TDS Broadband Service

 CONNECT new mexico <small>Office of Broadband Access & Expansion</small>	Andy Exell ARPA Coordinator
	andy.exell@connect.nm.gov (505) 490-2818

Program Updates

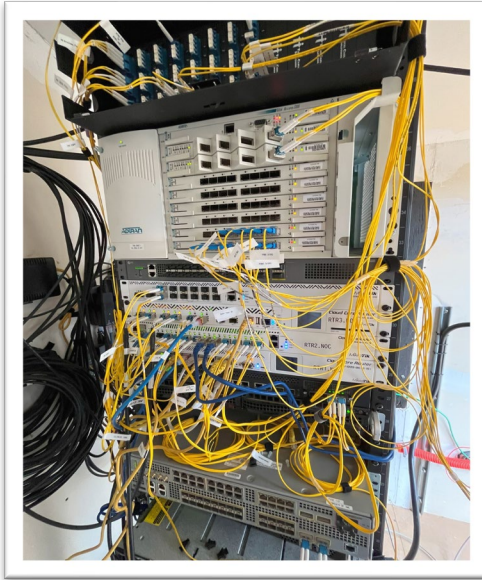
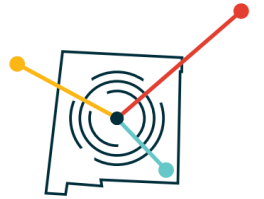


- Andrew Wilder is now Policy & Programs Bureau Chief at OBAE
- 4 Projects at Substantially Complete
 - Valley Telecom Group
 - Oso Internet Solutions
 - Sacred Wind, Western Gallup/Thoreau
 - Penasco Valley Telephone Coop
- Quarter 4 forms will go out last week of December.
 - Due back to me by January 20th.
 - Will be sent out in Submittable to POC
 - Follow up email to people in the organization
- OBAE Broadband Day
 - February 12th, at the Roundhouse
- If you prepaid 10% retainage (5)



INPUT FORM		
Enter information for Green Shaded		
Q3 2023 Response	Entry for Q3 2023	Instructions
\$1,200,000.00	\$0.00	Enter Paid - Cash Spend Amount for Q3 2023
\$2,450,000.00	\$2,450,000.00	Auto Populates
2023 Quarter 4 expenditures include: Project Salaries, Fringe, Limited Fees, Contract Labor, Fees, Small Equipment, Capital Equipment, Training, Travel and Supplies		Enter description of costs for Q3 2023
Less than 50% complete		Select from Drop Down
YES		Yes/No from Drop Down
YES		Yes/No from Drop Down. This includes being partially operational also.
		Please answer these questions if you have started construction and/or operations. Approximations are fine.
		If construction has started, approximately how many miles of cable/fiber have been completed? Enter Miles completed
		The number of BSLs passed? Enter Approx. number of locations passed
		If partially operational/operations how many customers have received service? Enter Approx. number of customers
10/1/2024		Enter mm/dd/yyyy format
12/31/2025		Enter mm/dd/yyyy format
12/31/2025		Enter mm/dd/yyyy format
10/21/2024		If Answer to Status in Construction Started = Yes, Enter mm/dd/yyyy format if Actual has occurred - otherwise N/A
N/A		Enter mm/dd/yyyy format if Actual has occurred otherwise N/A
N/A		Operations Started = Yes, Enter mm/dd/yyyy format if Actual has occurred otherwise N/A
YES		Select from Drop Down List
Phase One of Fiber Lateral is homes completed, awaiting equipment to install fiber into homes.	Enter Text	Add any Notes or Comments

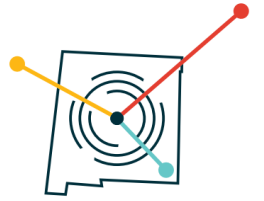
Workforce Development



- US Department of Labor grant for \$1.99M
- Three-year grant program 6/30/2028
- Partnering with the New Mexico Department of Workforce Solutions
- To get Certified Broadband Training available to all areas of New Mexico
 - Higher Education Institutions
 - Community Anchor Centers
 - Nations, Pueblos & Tribes
 - DWS American Job Centers



Workforce Development

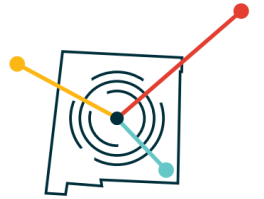


- Building Industry Consulting Service International (BICSI)
 - Will be providing the training, workbooks, equipment and AV
- Classes that are being scheduled:
 - Installer I Training
 - Installer 2, Copper Training
 - Installer 2, Optical Fiber Training
 - Technician Training
- All courses are 5 days of hands-on training
- Practical exam on last day, 1 year to take written test
 - Included with training, no expense, can retake also if needed
 - At any Pearson Vue Test Center (25 in New Mexico)
- 8-12 participants per class, up to 16 with space permitting
- Look at other classes depending on needs
 - They are giving us access to their whole catalog!

Bicsi



We Are Booking BICSI Classes



- Installer 1 Training Classes Scheduled Weeks of:
 - February 9th, NM America's Job Center in Santa Fe on Cordova
 - March 16th, Pueblo of Jemez, full
 - April 20th, TBD
 - May 11th, TBD
 - June 1st, TBD
 - June 8th, TBD
- Completely open booking after July 1st
 - Can follow up with advanced installation classes; copper, fiber & technician certifications
- Must enroll through NM Dept. of Workforce Solutions for training/certification to be paid by grant funding.
 - At a DWS America's Job Center
 - If you are hosting; DWS can send someone on site to enroll your staff
- Information on classes will be posted on the Connect New Mexico website shortly
- I will be sending out emails within the next few days

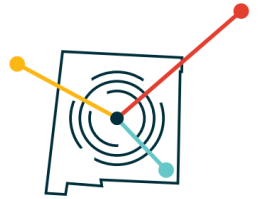
Last But Not Least



- Keep submitting reimbursement requests.
 - Turn around time from submitting to obae.invoices to posted by DFA under seven days.
- Please use the new V9 Locked Decimal spreadsheet or limit your spreadsheet to 2 decimal places.
 - Available on website.
 - Can email to you directly.
- Single Audit not required for For-Profit organizations.
- Questions? Requests?
- Have a great and safe time off for the holidays.



Topics



Sessions Held

- 4/17/25 Quarterly Report – Q1 2025, Preview of Close Out Process, RFR Update
- 5/1/25 Quarterly Report Results, Preview of Close Out Process.
- 5/15/25 Grant Reporting
- 6/12/25 Quarterly and RFR updates
- 6/26/25 Quarterly 2 report form
- 7/10/25 Budget Adjustment, Q2 Report questions
- 7/24/25 Connectivity to Declared Disaster Areas, Summer Site Visits, Calls for Reimbursements
- 8/21/25 Q2 Reporting Results, Reimbursement Refresher Request
- 9/18/25 Quarterly Reporting, Single Audit
- 11/20/25 Annual Report Results, New Xls. Spreadsheet & Workforce Development Program

Upcoming:

- Q4 Quarterly report input forms due
- Projects that have prepaid 10% retainage before the RFR revision
- GIS Mapping Tools?
- Requests?



Connect New Mexico Fund Pilot Program ARPA-CPF

Grantee Roundtable - Office Hours

December 18, 2025