



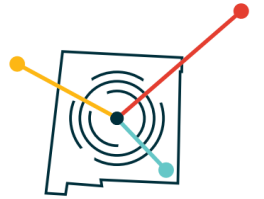
**CONNECT** new mexico  
Office of Broadband Access & Expansion

# Connect New Mexico Fund Pilot Program ARPA-CPF

## Office Hours-Roundtable

*January 15, 2026*

# Office Hours – January 15th, 2026, 3pm Mtn



Introductions

Program Updates

Quarterly Input Forms

Annual Monitoring

Workforce Development Update

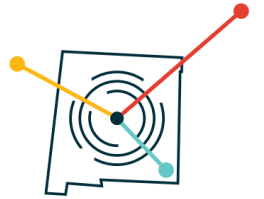
Last But Not Least

Questions

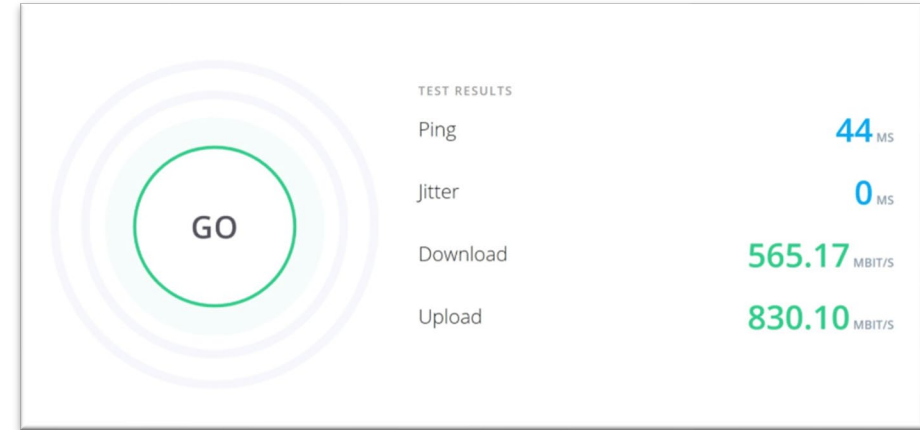
- Central New Mexico Electric Coop
- Comcast
- Ethos/SwC/Commnet
- Oso Internet Solutions
- Peñasco Valley Telephone Cooperative
- Pueblo of Jemez
- Pueblo of Laguna
- Pueblo of Nambe
- Pueblo of Santa Ana
- Santo Domingo Pueblo
- Socorro Electric Cooperative
- Tularosa Communications
- Valley Telecom Group
- TDS Broadband Service

 <p><b>CONNECT</b> new mexico Office of Broadband Access &amp; Expansion</p>	<p><b>Andy Exell</b> ARPA Coordinator</p> <p>andy.exell@connect.nm.gov (505) 490-2818</p>
---	---

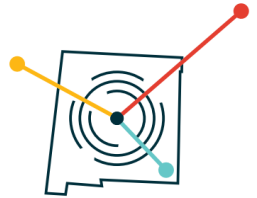
# Program Updates



- 1 Project Close Out Report Done
  - Peñasco Valley Telephone Coop
- Treasury Update as of Today
  - No extension to the program
    - Operate that it will end 12/31/2026
  - Submit reimbursements
    - Do not accumulate a large amount of invoices
  - There will be a wind down period for expenses incurred through 12/31
- OBAE Broadband Day
  - February 12<sup>th</sup>, at the Roundhouse
- BEAD should be approved at any time now.



# Quarterly Reporting – Q4 2025

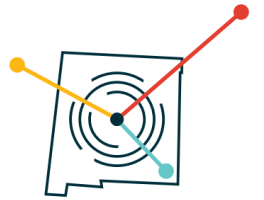


INPUT FORM		
	Enter Information for Green Shaded	
Q1 2025 Response	Entry for Q2 2025	Instructions
\$1,200,000.00	\$0.00	Enter Paid - Cash Spend Amounts for Q2 2025
<b>\$3,241,037.00</b>	<b>\$3,241,037.00</b>	Auto Populates
2025 Quarter 1 expenditures include: Project Salaries, Fringe, License/Fees, Contract Labor, Taxes, Small Equipment, Capital Equipment, Training, Travel and Supplies		Enter description of costs for Q2 2025
Less than 50% complete		Select from Drop Down
YES		Yes/No from Drop Down
YES		Yes/No from Drop Down, This includes being partially operational also.
10/1/2024	10/1/2024	Enter mm/dd/yyyy format
12/31/2025	12/31/2025	Enter mm/dd/yyyy format
12/31/2025	12/31/2025	Enter mm/dd/yyyy format
10/21/2024	10/21/2024	If Answer to Status is: Construction Started = Yes, Enter mm/dd/yyyy format if Actual has occurred - otherwise n/a
N/A		Enter mm/dd/yyyy format if Actual has occurred - otherwise n/s
N/A		If Answer to Status - Operations Started = Yes, Enter mm/dd/yyyy format if Actual has occurred - otherwise n/a
YES		Select from Drop Down List
Phase One of Fiber laterals to homes completed, awaiting equipment to install fiber into homes.	Enter Text	Add any Notes or Comments

***In the 4<sup>th</sup> Quarter we reimbursed \$7,085,634.33  
\$31,980,205.27 total, \$79,029,227.83 to go!***

- Sent out December 31<sup>st</sup>
- Timeframe for Report – October 1st through Dec. 31st, 2025
- Fill in green shaded areas
- Due January 20<sup>th</sup>
- Requested Information
  - Expenditures (cash spend) for Q4 2025
  - Description of Costs
  - Project Status
  - Projected and/or Actual Dates for Construction and Operations
  - Labor Compliance Validation if applicable
  - Special Comments – if you wish to add

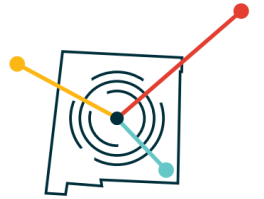
# Additional Information



- Question box added to the side
- This is only for OBAE reporting purposes
- For projects that have started construction and operations
- Looking for Fiber Miles, BSLs passed and Customers
- Does not need to be exact

<b>Please answer these questions if you have gone partially operational/operational. Approximations are fine.</b>	
If construction has started, approximately how many miles of cable/fiber have been completed?	Enter Miles completed
The number of BSLs passed?	Enter Approx. number of locations passed
If partially operational/operational how many customers have received service?	Enter Approx. number of customers

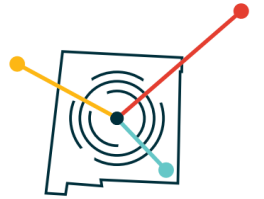
# Annual Monitoring



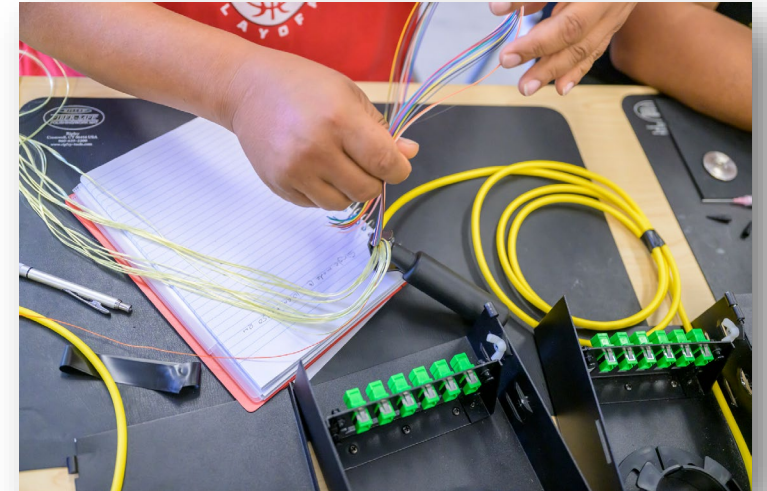
- Allows OBAE to track the project's impact
- Commencing on the first January 31<sup>st</sup> following Substantially Complete
- For five years
- OBAE is working on a standard form and data points
  - Number of subscribers and a breakdown if households, businesses, etc..
  - Network performance data
  - Network expansions that were enabled by the project
  - Changes to service offerings or pricing
  - Additional details ?



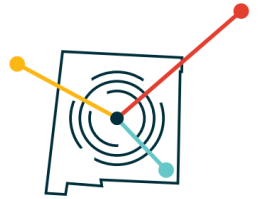
# Workforce Development



- Building Industry Consulting Service International (BICSI)
  - Will be providing the training, workbooks, equipment and AV
- Classes that are being scheduled:
  - Installer I Training
  - Installer 2, Copper Training
  - Installer 2, Optical Fiber Training
  - Technician Training
- Installer 1 Training Classes Scheduled Weeks of:
  - February 9<sup>th</sup>, NM America's Job Center in Santa Fe on Cordova
  - March 16<sup>th</sup>, Pueblo of Jemez, full
  - April 20<sup>th</sup>, TBD
  - May 11<sup>th</sup>, Mimbres Valley Learning Center, Luna County
  - June 1<sup>st</sup>, TBD
  - June 8<sup>th</sup>, TBD
- Completely open booking after July 1<sup>st</sup>
  - Can follow up with advanced installation classes; copper, fiber & technician certifications



# Last But Not Least

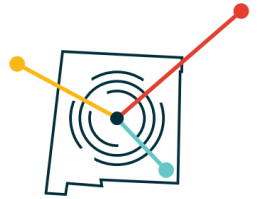


- Keep submitting reimbursement requests.
  - Turn around time from submitting to obae.invoices to posted by DFA under seven days.
- Please use the new V9 Locked Decimal spreadsheet or limit your spreadsheet to 2 decimal places.
  - Available on website.
  - Can email to you directly.
- This is the last year of this grant, let us know how OBAE can assist you toward completion.
- Questions? Requests?

The phrase Last but not least was first published in 1580s. It was used numerous time by Shakespeare which cemented its place in the English language.



# Topics



## Sessions Held

- 4/17/25 Quarterly Report – Q1 2025, Preview of Close Out Process, RFR Update
- 5/1/25 Quarterly Report Results, Preview of Close Out Process.
- 5/15/25 Grant Reporting
- 6/12/25 Quarterly and RFR updates
- 6/26/25 Quarterly 2 report form
- 7/10/25 Budget Adjustment, Q2 Report questions
- 7/24/25 Connectivity to Declared Disaster Areas, Summer Site Visits, Calls for Reimbursements
- 8/21/25 Q2 Reporting Results, Reimbursement Refresher Request
- 9/18/25 Quarterly Reporting, Single Audit
- 11/20/25 Annual Report Results, New Xls. Spreadsheet & Workforce Development Program
- 12/18/25 Program updates and Workforce Development project

## Upcoming:

- Projects that have prepaid 10% retainage before the RFR revision
- GIS Mapping Tools?
- Requests?



0.90677

# CONNECT new mexico

Office of Broadband Access & Expansion

## Connect New Mexico Fund Pilot Program ARPA-CPF

## Grantee Roundtable - Office Hours

*January 15, 2026*