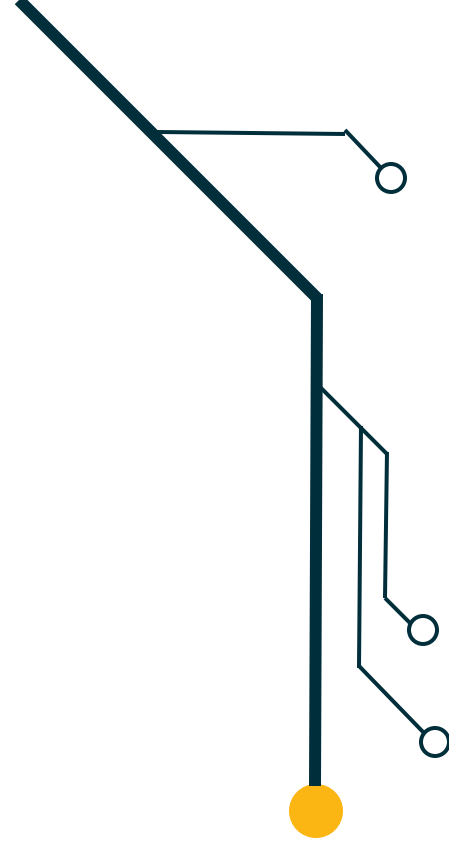


Tribes, Nations, and Pueblos: Facilitated Session



Mission and Vision of Office of Broadband

- **Mission:** Passionate leadership to drive bold, equitable, and inclusive broadband solutions
- **Vision:** Achieve bold, affordable broadband solutions for New Mexicans that honor the state's rich heritage and elevate quality of life for all
- **Values:** Seven values defining OBAE's people, processes, planning, and programs: 1) bold; 2) honest; 3) curious; 4) innovative; 5) respectful; 6) collaborative; 7) analytically rigorous
- **Four major goals**
 - Universal Broadband Availability
 - Broadband Adoption and Meaningful Usage
 - Statewide Next Generation Networks
 - Program Stewardship
- **These goals are foundation of the 3-yr Plan submitted Jan 01, 2023 that describe strategic priorities, initiatives and actions to accomplish each goal**



Introductions

- *Kelly Schlegel - Director of the Office of Broadband Access and Expansion*
- *Joanne Hovis – President, CTC Technology & Energy*
- *Joaquin Alvarado – Community Engagement Facilitator*

Broadband, Equity Access and Deployment (BEAD)

The BEAD program will expand high-speed Internet access by funding **planning, infrastructure** deployment and **adoption** programs.

Digital Equity Act Programs

The Digital Equity Act provides funding to establish programs that aim to ensure that all people and communities have the **skills, technology, and capacity** needed to reap the full benefits of our digital economy.

State consultations with sovereign Tribal entities are critical to planning efforts



Understand current broadband infrastructure challenges, plans and priorities

Understand unique challenges in access and use of broadband

Understand critical community anchor institutions and programs facilitating effective broadband access and use

Incorporate Tribal priorities into grant design and digital equity initiatives as allowable by NTIA

Locations eligible for funding

Unserved
Below 25/3

Underserved
25/3-100/20

Community
Anchors
Below gigabit

Locations that have prior grant funding commitments at those speeds will be ineligible

- The state is allowed to reject those prior funding commitments on Tribal lands if the providers do not have documented consent from tribal authorities

New Mexico must use new address-level federal maps for determining eligibility



Missing locations can be challenged via the FCC map

State will be required to use the FCC map as starting point, but can incorporate other information from its own mapping for prioritization and analysis

State will run a challenge process but must follow detailed NTIA rules for allowing a location to be turned from served to unserved, underserved to served etc.

New Mexico's grant program for deployments must be open, transparent & competitive

- ❑ Traditional as well as non-traditional providers must be included
- ❑ Point system will be used to evaluate proposals
- ❑ NTIA predetermines many of the categories and how they can be scored
- ❑ The State may add other categories and modest points to its priorities, including the need for local and Tribal endorsement or agreement
- ❑ The State may not award to providers on Tribal lands unless the providers have documented consent from the tribal authority

State must favor fiber



Only if a proposal for an area does not receive a proposal for fiber or there are very remote locations that make it cost-prohibitive

The State may then peel those locations or areas away for alternative, cheaper technologies

WHAT IS “DIGITAL OPPORTUNITY AND EQUITY”?

Five elements of digital opportunity and equity:



Broadband Access:

Affordable, accessible, and reliable high-speed home internet service is available for all individuals



Accessible and Inclusive Content:

Public online content is inclusive and accessible by all individuals



Devices and Tech Support:

Individuals have access to computers or tablets and technical support



Privacy and Security:

Individuals can protect their data privacy and online security



Digital Literacy and Skills:

Individuals have digital skills to support their ability to meaningfully use the internet in their daily lives

Prioritization mandated by NTIA

New Mexico will develop a statewide plan for expanding broadband to all in-state addresses

Funding priorities for fiber-to-the-premises deployment

1. **Unserved locations:** those that cannot get internet service at least 25/3 Mbps
2. **Underserved locations:** those that get internet service between 25/3 and 100/20 Mbps
3. **Community Anchor Institutions** (schools, libraries, hospitals, public safety):
locations that cannot get 1 Gbps internet
4. **Low income and affordable housing**

Planning

2023

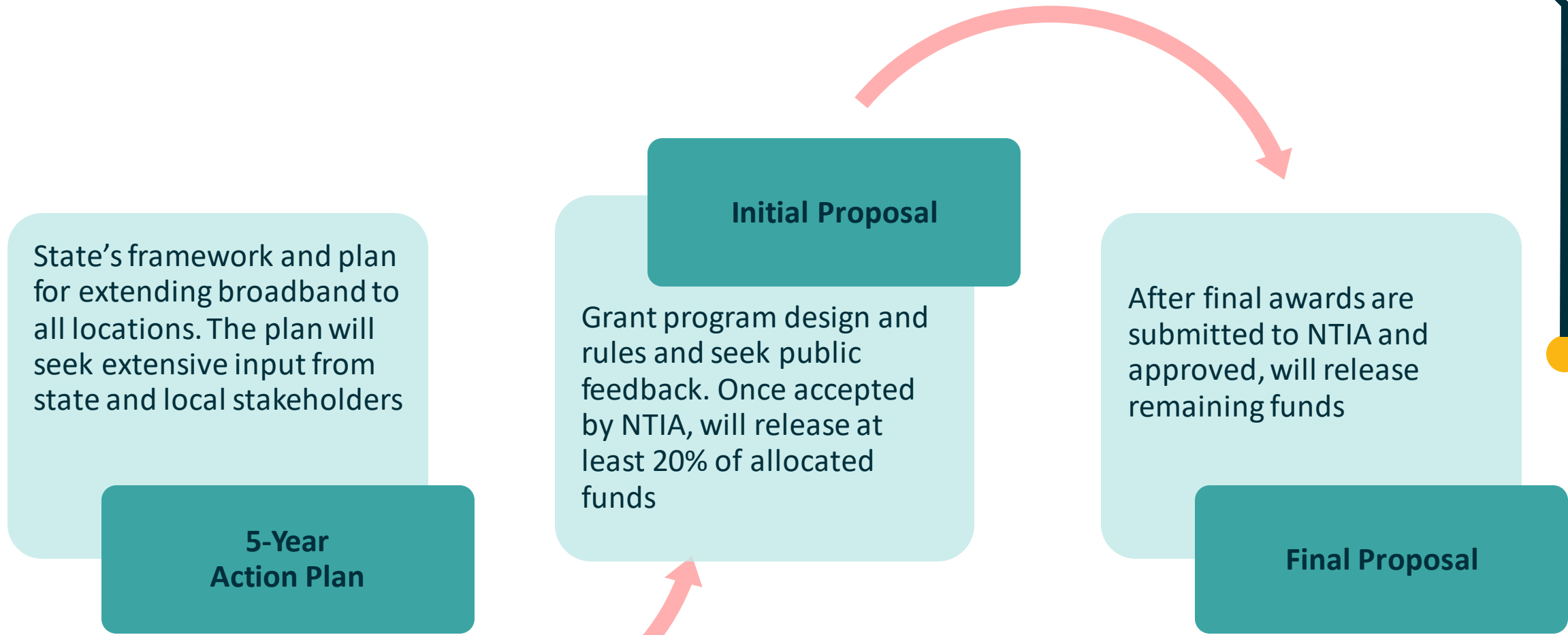
Provisional grant program

2024

Deployment

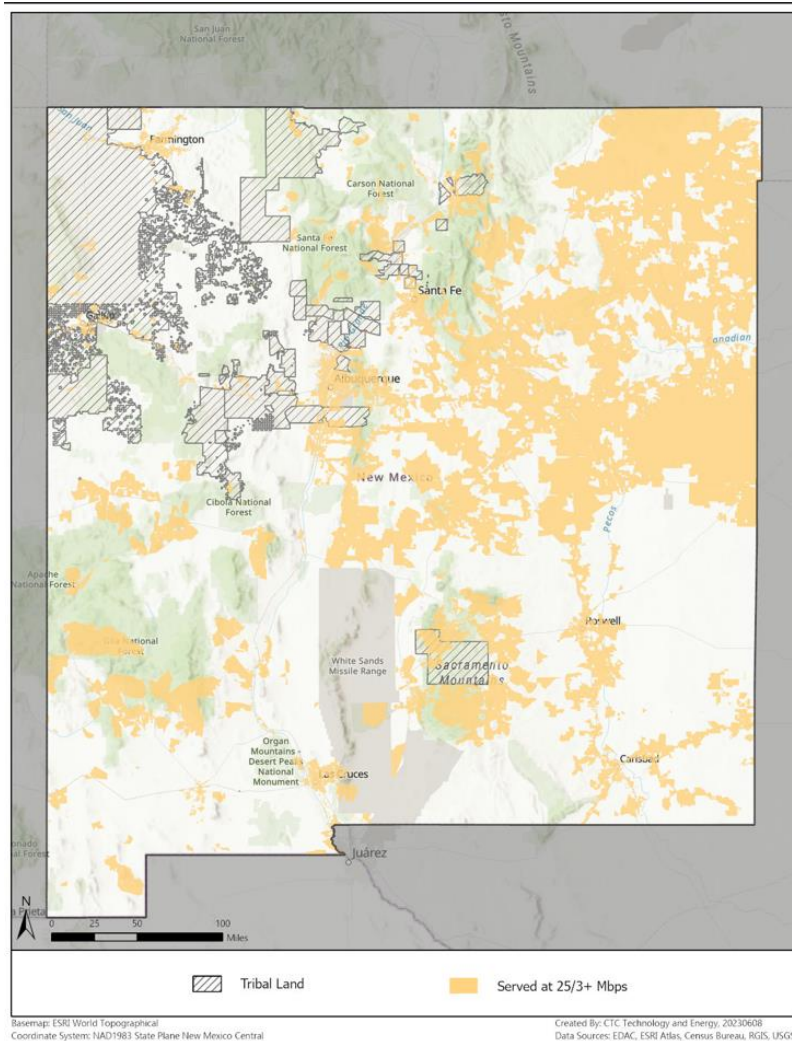
2025

Required Planning Will Result in Release of Funds

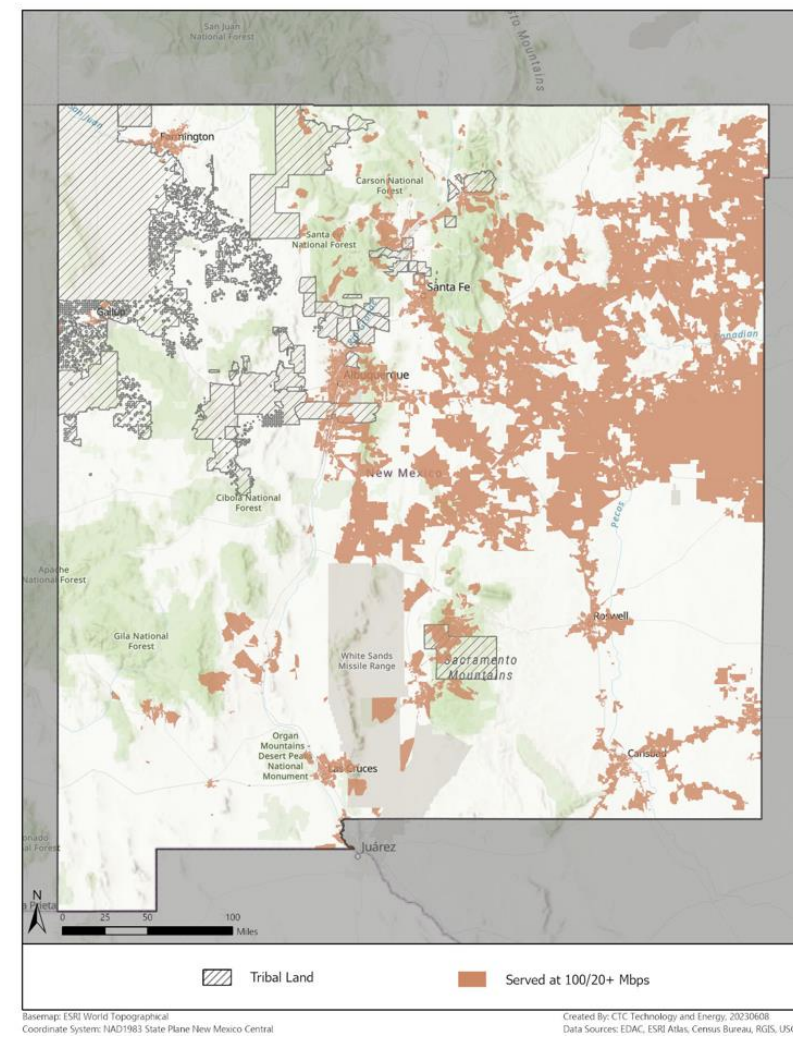


Broadband Maps

25/3 Mbps speed coverage



100/20 Mbps speed coverage



Discussion on BEAD



- What has your experience been with private ISPs, addressing your community's needs, and respecting Tribal priorities and sovereignty?
- What has worked and what hasn't?
- If private ISPs would want to partner with your community what would they need to bring to the table?

Stakeholder Surveys



Agency Asset Inventory

Infrastructure-related assets that may help facilitate or reduce the cost of broadband deployment in the state



Community Anchor Connectivity

Barriers and obstacles to clients, facility access, criticality of internet to mission and program capacity



ISP Workforce Preparedness

Sources for hiring, workforce programs, ACP, internet skills and adoption, collaboration in community, deployment approaches, disaster recovery plans



Workforce Programs Inventory

Workforce programs profile, barriers to developing diverse & skilled workforce, ISP workforce-related questions



Digital Equity Program Inventory

Program details, planned program types & areas of focus, broadband impacts on programmatic outcomes



Barriers & Obstacles for Covered Populations

Internet, computer & content access, digital skills, data security, barriers & obstacles, broadband impacts on programmatic outcomes

Discussion on Digital Equity (DE)

- Should the definition of CAI be expanded to recognize certain key community anchors that would otherwise not be included? Are they getting gigabit symmetric connectivity?
- Are there barriers unique to your community that are critical to understand/address? What are they?

Connect with us

Contact

Kelly Schlegel

Email

kelly.schlegel@connect.nm.gov

Website

<https://www.connect.nm.gov/>

