

SEN ADVISORY COMMITTEE – DEC. 21, 2023

AGENDA

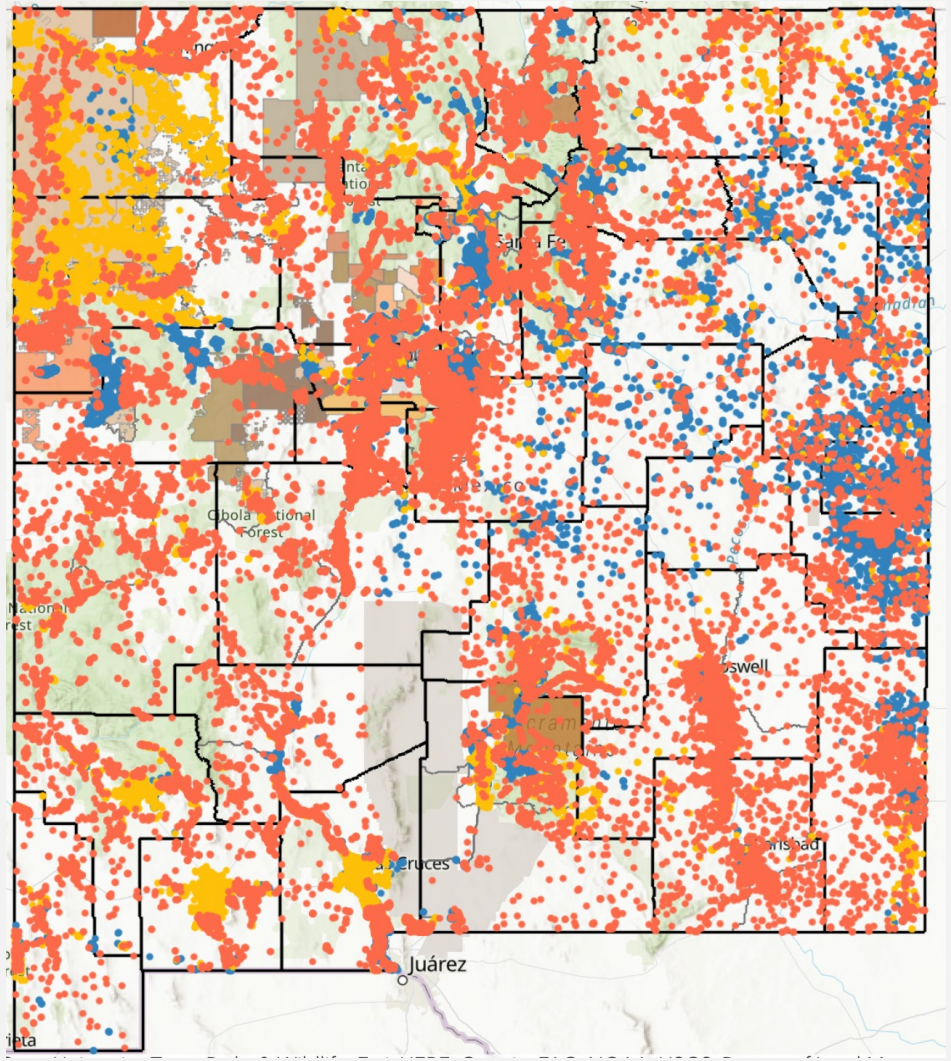
- Presentation: Kim King – LMS Director | Canvas
- Brief Updates – Broadband and OBAE
- Statewide Education Network (SEN): Phase1 – Status & Timeline
- SEN Phase2 – Procurement status
- Other Items

PRESENTATION – KIM KING (PED LMS DIRECTOR): CANVAS

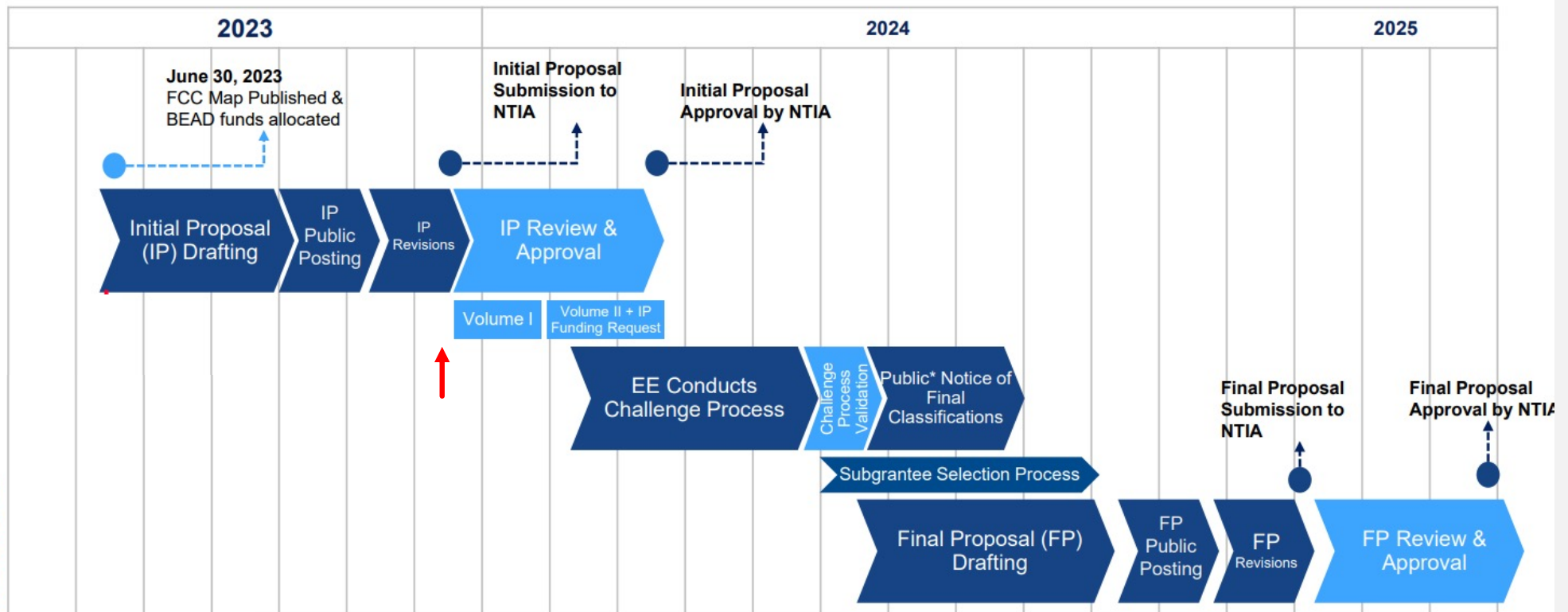
- What is Canvas?
- How is it used in NM?
- Canvas & the Statewide Education Network

UPDATES – BROADBAND & OBAE

- Broadband Summit – (Sold Out) Congratulations Organizers!
 - NTIA Process, Mapping & Challenges (FCC), Supply chain, Pole attachments, Permitting, Workforce development, Digital Equity...
- Updated Maps: Number of Unserved
 - connect.nm.gov
- Initial Proposal Vol1. – Submitted to NTIA
- Initial proposal Vol2. – Target submission today
- Community Anchor Institutions (CAIs): 1Gbps symmetrical



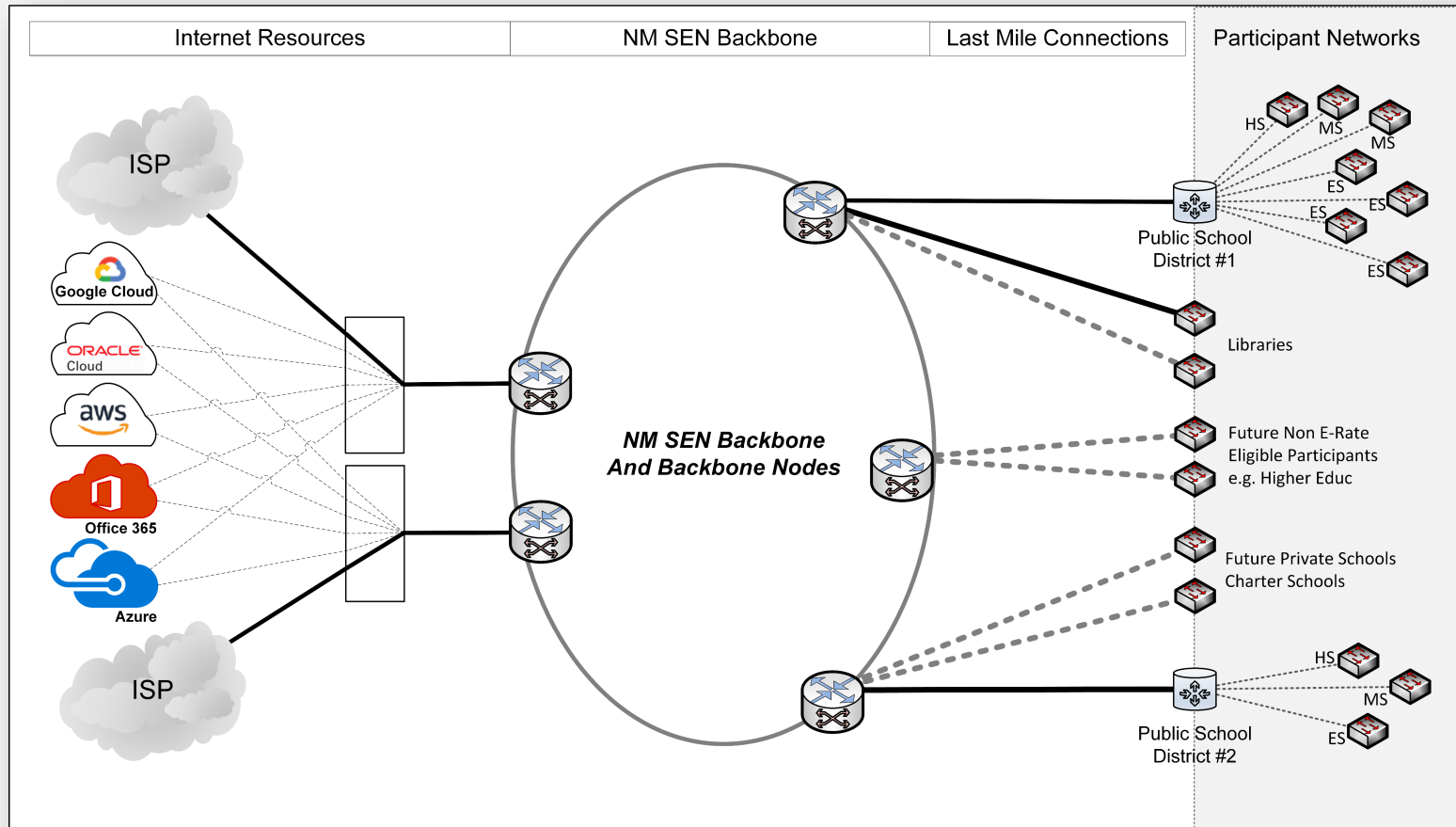
BROADBAND EQUITY ACCESS AND DEPLOYMENT (BEAD)



*Per the BEAD NOFO, an Eligible Entity must provide public notice of the final classification of each unserved location, underserved location, or Eligible Community Anchor Institution within the jurisdiction of the Eligible Entity after resolving each challenge and at least 60 days before allocating grant funds for network deployment.



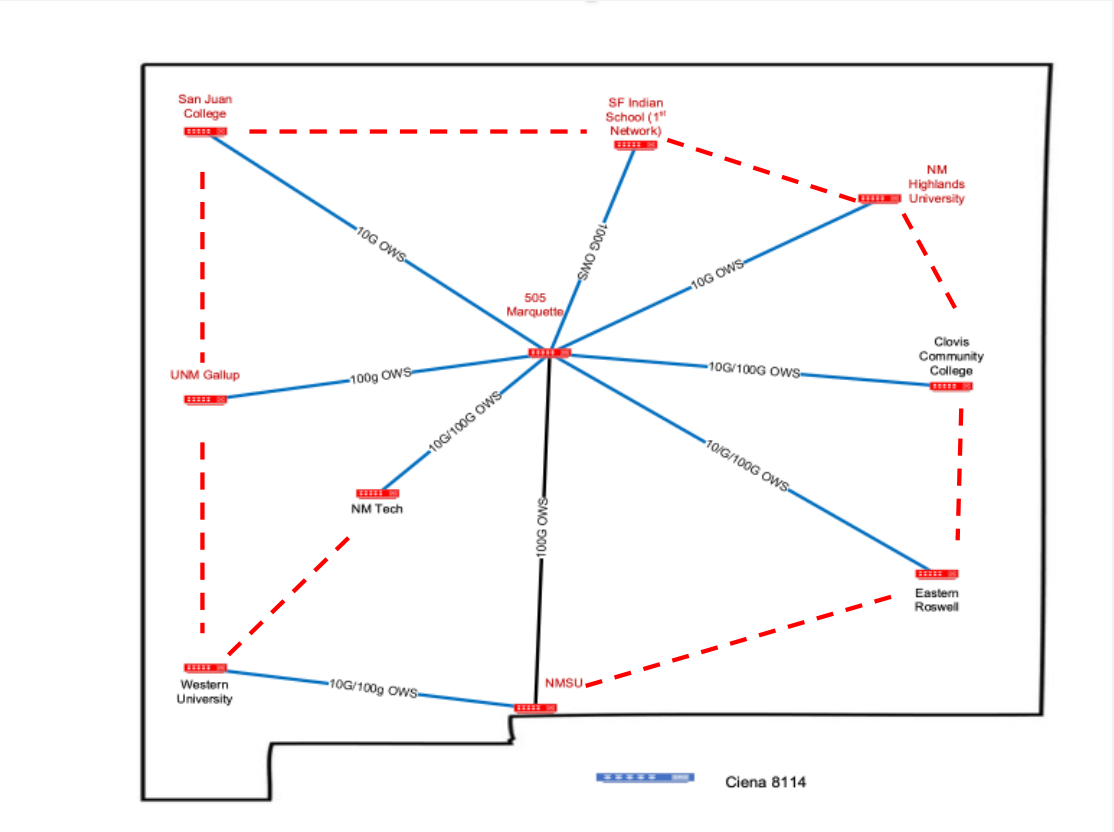
SEN PHASE 1 - OVERVIEW



SEN PHASE 1 - OVERVIEW

— SEN 100G Wave (Lumen)

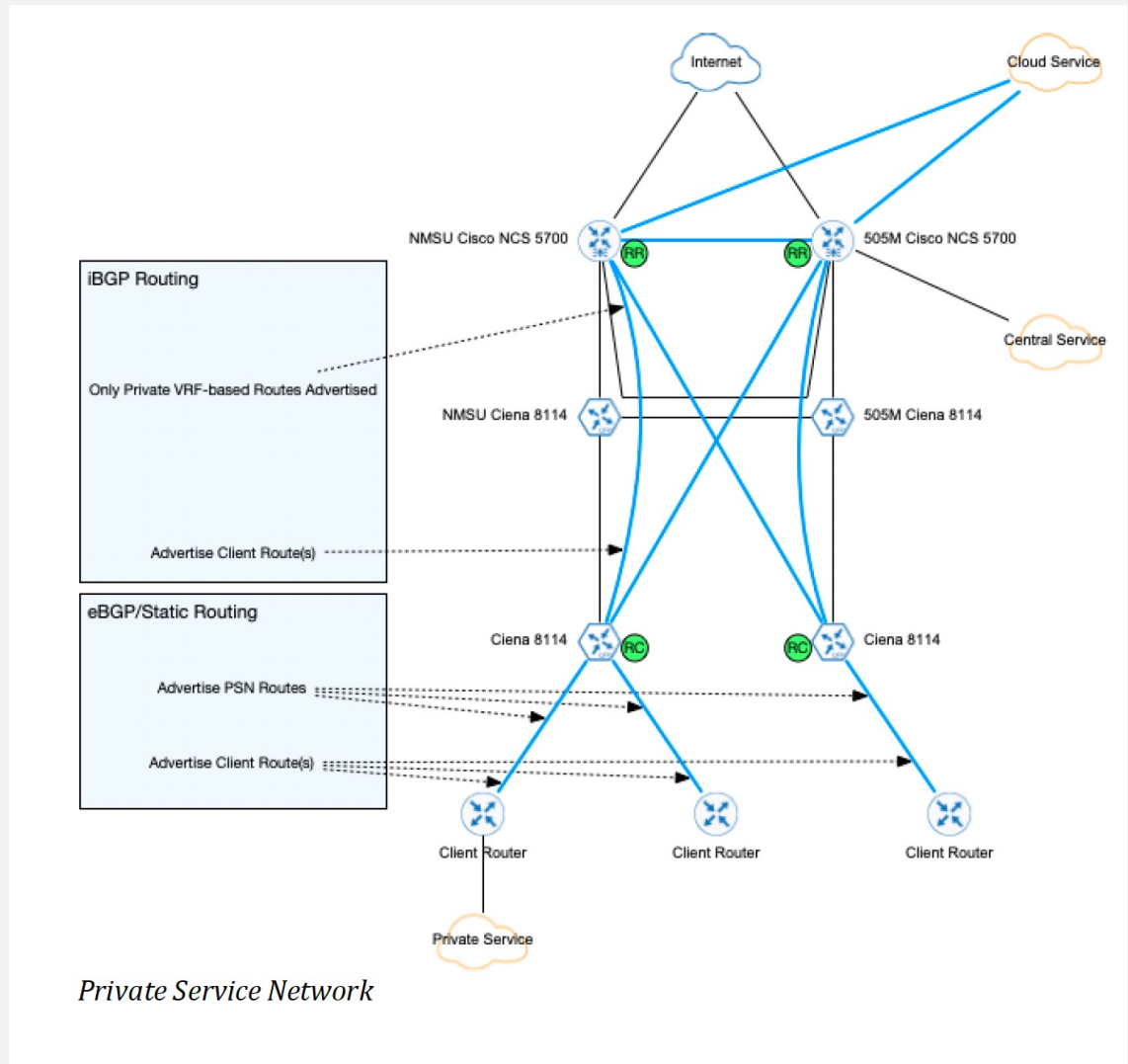
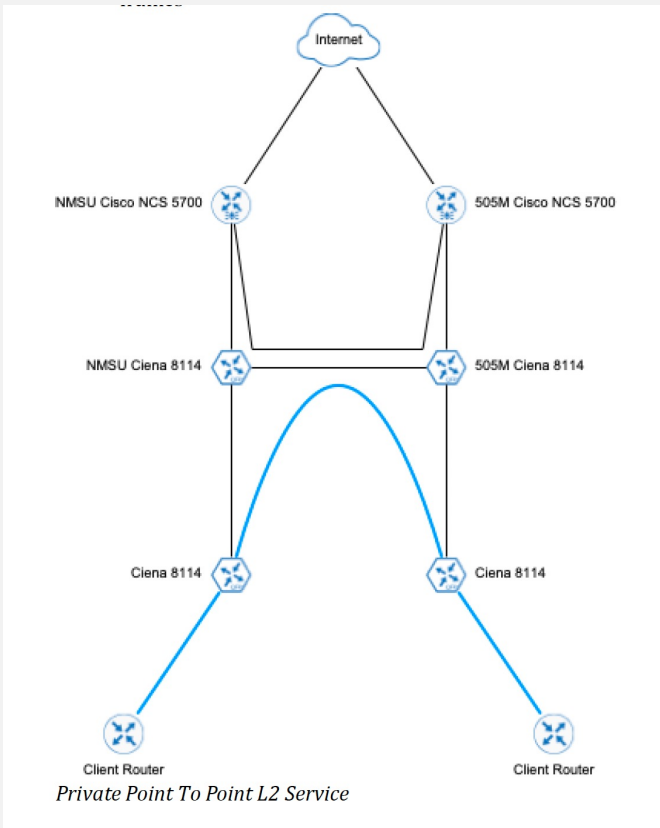
- - - Future State-Coordinated
XXXG Wave (YY Vendor)
Alternative Path(s)



SEN PHASE 1 - STATUS

- ~~High Level Design (HLD) Complete~~
- ~~Secured SEN AS# and IPv6 address block:~~
 - NM SEN (Transport): AS36858
 - /32 IPv6 (~65,536 sites or /48 assignments)
- ~~Commodity Internet Agreements Finished:~~ Assigning project teams
- Developing Low Level (Detailed) Design (LLD): Target Completion | January 2024
 - Working on IPv6 (and IPv4) architecture / assignments
- Testing procedures
- Reviewing Nodes (HigherEd) designs & documentation with participants
 - MOUs with the 10 nodes owners (upgrades and operations): Clovis CC signed
- Finalizing Agreements (Last Mile – Comcast, Conterra, Lumen, Plateau, Unite Private Networks, Windstream)
- DDoS Protection + Intrusion Detection and Prevention (monitoring) tools
- Network Management

SEN PHASE 1 - DESIGN



SEN PHASE1 - TIMELINE

- December 2023/January 2024 – Finalize MOUs (Legal review)
- February/March '24– Circuits ready for provisioning / Complete engineering / K12 Coord.
- March/April '24 – Circuit provisioning / Equipment installation / Testing / K12 Coord.
- April-June '24 (& Ongoing) -> Switchover of Phase1 Participants
- July 1, 2024 -> Operations

SEN PHASE2 – PROCUREMENT STATUS

- ~50+ Participants
- Potential Additional nodes
- Publication ~~Nov. 27th~~ Dec. 21st, 2023– through ~~Mid-January~~ February, 2024 (E-rate...)
- ~~Jan / Feb. / March~~ Evaluations & Awards
- March 2024 – E-rate deadline
- Negotiations / Agreements (School Boards approvals)

OTHER ITEMS